

PORT OF NEWPORT REGULAR MONTHLY COMMISSION MEETING AGENDA

Tuesday, November 27, 2018 6:00 p.m.
South Beach Activities Room
2120 SE Marine Science Drive, Newport, OR 97365

	Page
I. Call to Order	
II. Changes to the Agenda	
III. Public Comment (3 minute limit per person)	
IV. Consent Calendar	
A. Minutes	
1. Regular Commission Meeting 10/23/18.....	3
2. Commission Special Meeting 11/13/18.....	9
B. Financial Reports	11
V. Old Business	
A. Items Removed from Consent Calendar	
B. Accounts Paid	29
VI. New Business	
A. Website Preview	43
VII. Staff Reports	
A. Accounting Supervisor.....	45
B. Director of Operations	47
1. October Occupancy Report.....	57
2. October TCB Security Report.....	59
C. General Manager.....	79
VIII. Commissioner Reports/Comments	
IX. Calendar/Future Considerations	
Association of Pacific Ports Seminar.....	11/29/18
Port Holiday Party.....	12/07/18
Cascades West Area Commission on Transportation Meeting.....	12/13/18
Regular Commission Meeting	12/18/18
Christmas Holiday – Office Closed	12/25/18
X. Public Comment (5 minutes limit per person)	
XI. Adjournment	

Regular Monthly Meetings are scheduled for the fourth Tuesday of every month at 6:00 pm.

The Port of Newport South Beach Marina and RV Park Activity Room is accessible to people with disabilities. A request for an interpreter for the hearing impaired or for other accommodations for persons with disabilities should be made at least 48 hours in advance of the meeting to Port of Newport Administration Office at 541-265-7758.

Link for directions to the RV Park Activity Room: <http://portofnewport.com/rv-parks/map.php>

PORT OF NEWPORT MINUTES

October 23, 2018

Regular Commission Meeting

This is not an exact transcript. The audio of the session is available on the Port's website.

Agenda Item

**Audio
Time**
0:00

I. CALL TO ORDER

Commission President Stewart Lamerdin called the Regular Commission Meeting of the Port of Newport Board of Commissioners to order at 6:00 pm at the South Beach Activities Room, 2120 SE Marine Science Drive, Newport, Oregon.

Commissioners Present: Walter Chuck (Pos. #1), Secretary/Treasurer; Sara Skamser (Pos. #2), Vice President; Stewart Lamerdin (Pos. #3), President; Jeff Lackey (Pos. #4); and Jim Burke (Pos. #5).

Management and Staff: Teri Dresler, Interim General Manager; Aaron Bretz, Director of Operations; Mark Harris, Accounting Supervisor; and Becca Bishop, Accounting Clerk.

Members of the Public and Media: Jim Shaw; Pat Ruddiman, ILWU; Jim Cline, Rogue; Leon Noble, Sea Scouts Rampart.

II. CHANGES TO THE AGENDA

0:10

There were no changes to the agenda.

III. PUBLIC COMMENT

0:30

There was no public comment at this time.

IV. CONSENT CALENDAR.....

0:46

A. Minutes:

- 1. Regular Commission Meeting & Supplemental Budget
Hearing..... 9/25/18
- 2. Special Commission Meeting 10/15/18

B. Financial Reports

A motion was made by Skamser and seconded by Lackey to approve the Consent Calendar as written. The motion passed 5 – 0......

1:08

V. CORRESPONDENCE/PRESENTATIONS

- A. William Lackner for the members of the Clam Diggers Association of Oregon Crabbing at the International Terminal.....

1:35

Dresler advised that Lackner was not at this meeting because he was sick. He will attend a future meeting.

B.	<u>Sea Scouts Rampart, Leon Noble</u>	1:56
----	---	------

Noble introduced his request expressing a need for work experience so that young people could develop skills. He said he was requesting that the Port provide a location for their operation at zero cost in exchange for service. He referred to the report and application included in the Meeting Packet. Noble spoke to the values and activities anticipated for the Sea Scouts. He referred to the property in South Beach for consideration. Dresler introduced a letter of support received from Superintendent Gray, added as a Meeting Packet Addendum. She said that Bretz had researched the costs for improvements that would be needed at the facility; Bretz provided some details. Burke commented on the dissolution of a previous Sea Scout unit in Newport, and expressed concerns about derelict vessels and liability to the Port. Noble explained how a unit is formed, and how assets would be assumed when a unit folded. Dresler noted that legal counsel has not yet reviewed the proposal, but this would be developed as a lease with attorney and risk management review. A grant would be sought for repairs to the facility. Lamerdin said this situation may need additional scrutiny as to possible liability. Skamser commented on the opportunity this would provide, but also concerns about the building. Chuck raised the issue of another business potentially interested in leasing the property. Lackey asked if there were other Sea Scout units in Oregon, and Noble said there were others who were associated with yacht clubs in Portland and Eugene. Lamerdin said the Commission in general supported the idea but this was subject to further investigation by staff. Dresler will provide an email update to the Commissioners.

C.	<u>Loyalty Days Carnival</u>	41:34
----	------------------------------------	-------

Lamerdin referred to the letter included in the Meeting Packet. Dresler said that Sgt. Bobega was not present to speak to this item. She provided some background on the contract for the carnival and the scholarship provided by the Loyalty Days committee. The committee members had met with Dresler to discuss their ability to provide the scholarships with the increased rate, and the use of the Port’s property. She proposed asking for a fee of \$500 for the 2019 event and a provision for an increase in subsequent years.

VI. OLD BUSINESS

A.	<u>Items Removed from Consent Calendar</u>	
----	--	--

There were no items removed from the Consent Calendar

B.	<u>Accounts Paid</u>	49:10
----	----------------------------	-------

Mark introduced the report and explained the new format. The Commission expressed appreciation for the efficiency.

VII. NEW BUSINESS

A.	<u>General Manager Hiring Process</u>	52:08
----	---	-------

1.	Position Description	52:14
----	----------------------------	-------

Lamerdin declared a potential conflict of interest in that he intended to apply for the position, and would recuse himself from the discussion once he applied as advised by George Dunkel of SDAO. He added that it was important for the Port to move forward with recruiting for the two positions.

Dresler introduced the draft Position Description included in the Meeting Packet and the Organizational Chart identified in item B(1). She said she had consulted with George Dunkel in preparing this information, and she felt he was well prepared to help with the process. She advised that the Commission would need to approve the Position Description, the recruitment process, and the contract with SDAO for consulting services. Dresler explained how she had developed the draft Position Description. The Commission provided feedback on the document. They commented that it was important to get the right candidate, and the process could be re-run if a suitable candidate was not found. Lackey commented that Dresler would be helpful in this process and expressed concern with finding out sufficient information about candidates before making a decision. Dresler added that a passion for public work should be part of the conversation.

2. Draft Timeline..... 1:24:37

Skamser asked if there would be community involvement in the process. Chuck discussed some past practices. Stewart commented on the items in the draft timeline and those who would be involved. Teri spoke about some options. Dresler suggested she make some changes and work with Dunkel on formatting, and send them to the Commissioners for review. Commissioners will send any additional comments to Dresler. Dresler commented that the timeline is a guide. Dresler will discuss with Dunkel about comments from this Commission Meeting. She spoke about the possibilities for who would be involved at each step. Lamerdin suggested a Work Session to discuss some of the details with Dunkel, where a recruitment process and Position Description could be formally adopted.

Lamerdin invited public comment. There was no public comment at this time.

3. SDAO Consulting Services Contract..... 1:29:58

A motion was made by Chuck and seconded by Lackey to enter into negotiations with SDAO to conduct the General Manager search at a rate of \$50.00 per hour not to exceed 80 hours, plus expenses not to exceed \$1000.00 without additional approval. The motion passed 5 – 0.

B. Director of Business Operations (Formerly Director of Finance) 1:31:08

1. Organizational Chart..... 1:31:20

Dresler commented on the addition of the Accounting Supervisor position required change to the previous organizational chart and change to the director position.

2. Position Description..... 1:32:07

Dresler said this description included input from Todd Kimball, financial consultant. Dresler explained the development of the description and proposed role of the Director of Business Operations, and a suggestion to start the recruitment in the next month and a half. She asked for feedback from the Commission on the draft. There was discussion about the timing of the hiring for this position. Chuck suggested a couple of Commissioners be involved in the hiring process. Skamser commented that an increase in efficiencies would be good for the Port. There was consensus that there was a business need to fill this position. Chuck will act as a Commission liaison on the hiring process and report back to the Commission.

VIII. DEPARTMENTAL REPORTS

A. Accounting Supervisor..... 1:49:39

Harris introduced the Staff Report, financial analysis, and long term debt report included in the Meeting Packet and addenda. He said that Todd Kimball had completed the bulk of the work on the analysis, and the focus was on the General Fund. The Commissioners expressed appreciation for the analysis. Harris added comments on changes to the bank accounts. There was some discussion on the long term debt report.

B. Director of Operations..... 2:01:18
1. September Occupancy Report

Bretz introduced the Staff Reports included in the Meeting Packet. He added information about additional amp service at the Port Dock 5 pier. Bretz elaborated about fill material needs. There was some discussion of property owned by Ted Painter and other items on the Rondys property and Port property at the Terminal. Bretz said he received responses to the Request for Proposal for sorting material at McLean Point and some options were discussed, as well as royalties. Skamser commented on the good communication between the Port and Rondys.

C. General Manager..... 2:22:05

Dresler introduced the Staff Report. Dresler advised the Commission about the retirement of Bryan Farmer, Commercial Marina Operations staff. She said that January 1, 2019, would be the deadline for taking any corrective action regarding pay equity. More information will be presented in November.

Lackey declared an actual conflict of interest in regards to the Midwater Trawlers Cooperative request for a letter of support because he managed two fishing vessels owned by his father-in-law. There was consensus among the remaining Commissioners to send a letter of support. Dresler will work with Heather Mann to compose the letter. Dresler proposed sending a letter of thanks to the Coastal Caucus for their advocacy for Army Corps of Engineers funding. The Commission directed Dresler to draft a letter. Dresler introduced the Major Port Activities spreadsheet included as an addendum to the Meeting Packet. She proposed that this be updated quarterly to be brought to the Commission at Regular Meetings. The Commissioners requested that this be sent electronically. Dresler commented this would also be valuable for staff.

IX. COMMISSIONER REPORTS/COMMENTS 2:32:56

Lamerdin reported that he, Skamser and Dresler met with Representative David Gomberg to discuss Port issues and moving forward. Skamser commented that communication will continue to be important across the board and the importance of the Port of Newport to the State’s economy. Lamerdin talked about sending out a bullet point list of what’s going on at the Port to local media and others as part of the communication effort. Teri will work with the Commission on preparing this one-pager.

X. CALENDAR/FUTURE CONSIDERATIONS 2:36:44

- Fishermen’s Appreciation Day 11/9
- Dia de los Muertos Run 11/3
- Veteran's Day Observed - Office Closed 11/12
- Newport Turkey Trot 11/22

Strategic Business Plan Kick-off Meetings	11/19-11/20
Thanksgiving Holiday – Office Closed.....	11/22-11/23
Regular Commission Meeting	11/27
Port Holiday Party.....	12/7
Cascades West Area Commission on Transportation Commission Meeting	12/13
Regular Commission Meeting	12/18
Christmas Day – Office Closed	12/25

There were no changes to the Calendar/Future Considerations.

XI. PUBLIC COMMENT..... 2:37:23

Jim Shaw apologized for his phone going off during the meeting.

XII. ADJOURNMENT 2:37:58

Having no further business, the meeting adjourned at 8:38 pm.

ATTESTED:

Stewart Lamerdin, President

Walter Chuck, Secretary/Treasurer

PORT OF NEWPORT MINUTES

November 13, 2018
Commission Special Meeting

This is not an exact transcript. The audio of the session is available on the Port’s website.

Agenda Item

**Audio
Time**
0:00

I. CALL TO ORDER

Commission President Stewart Lamerdin called the Commission Special Meeting of the Port of Newport Board of Commissioners to order at 12:00 pm at the South Beach Activities Room, 2120 SE Marine Science Drive, Newport, Oregon.

Commissioners Present: Walter Chuck (Pos. #1), Secretary/Treasurer; Sara Skamser (Pos. #2), Vice President; Stewart Lamerdin (Pos. #3), President; Jeff Lackey (Pos. #4); and Jim Burke (Pos. #5).

Management and Staff: Teri Dresler, Interim General Manager; and Karen Hewitt, Administrative Supervisor.

George Dunkel, SDAO Consultant, participated by phone.

Members of the Public and Media: Jim Cline, Rogue; Heather Mann; Midwater Trawlers Cooperative (MTC); Rex Capri, Newport resident.

II. PUBLIC COMMENT.....

0:26

There was no public comment at this time.

III. GENERAL MANAGER HIRING PROCESS

0:32

- A. Staff Report
- B. General Manager Recruitment Brochure
- C. Timeline
- D. SDAO Consulting Services Contract

Dresler introduced the documents, included in the Meeting Packets. She noted that the timeline was revised since presented on October 23rd. Dresler recommended moving forward with the process, hopefully to seat a new General Manager in February 2019. Lamerdin declared a potential conflict of interest since he was considering applying for the position. The Commissioners discussed the hiring process and brochure with Dresler and Dunkel. Dunkel asked the Commission to approve moving forward, but give himself and Dresler editorial privileges. The job description would not change.

A motion was made by Chuck and seconded by Burke to approve authorizing George Dunkel to open the General Manager Recruitment on November 14, 2018; and approve the General Manager hiring process, with editorial allowances to Teri Dresler and George Dunkel, the timeline, the recruitment brochure, and the SDAO Consulting Services Agreement for Consulting Services at a rate of \$50.00 per hour not to exceed 80 hours (\$4,000.00) plus expenses not to exceed \$1,000.00. The motion passed 5 – 0.....

34:22

There was consensus that Chuck and Skamser will serve as Commission liaisons to the General Manager search committee, and Lackey will serve as Commission advisor to Dresler for the Director of Business Operations search. Dresler will email the list of associations where Dunkel will post the General Manager recruitment information.

IV. PUBLIC COMMENT 44:44

There was no public comment at this time.

V. ADJOURNMENT 44:56

Having no further business, the meeting adjourned at 12:46 pm.

ATTESTED:

Stewart Lamerdin, President Pro Tem

Walter Chuck, Secretary/Treasurer Pro Tem

Port of Newport - General Operating Fund

Balance Sheet

As of October 31, 2018

	Oct 31, 18	Oct 31, 17	\$ Change
ASSETS			
Current Assets			
Checking/Savings			
11000 · Available Cash & Equivalents	2,092,319	2,072,886	19,433
11070 · Restricted Cash & Equivalents	1,061,131	721,872	339,259
Total Checking/Savings	3,153,450	2,794,758	358,692
Accounts Receivable			
11200 · Accounts Receivable	227,489	344,702	(117,213)
Total Accounts Receivable	227,489	344,702	(117,213)
Other Current Assets			
11250 · AR Property Tax	10,335	10,335	0
11255 · Allow for Bad Debt - CM	(20,000)	(20,000)	0
11260 · Allow for Bad Debt - SB	(10,000)	(10,000)	0
11270 · Undeposited Funds	4,453	6,195	(1,742)
11300 · Prepaid Expenses	103,333	71,887	31,446
11400 · Due from Other Funds	17,570	33,005	(15,435)
11480 · PERS - NPA(L)	(635,021)	(635,021)	0
11485 · PERS - Deferred OF	369,154	369,154	0
Total Other Current Assets	(160,176)	(174,445)	14,269
Total Current Assets	3,220,763	2,965,015	255,748
Fixed Assets			
11500 · Capital Assets	77,538,301	80,525,304	(2,987,003)
Total Fixed Assets	77,538,301	80,525,304	(2,987,003)
TOTAL ASSETS	80,759,064	83,490,319	(2,731,255)
LIABILITIES & EQUITY			
Liabilities			
Current Liabilities			
Accounts Payable			
12000 · Accounts Payable	424,756	468,229	(43,473)
Total Accounts Payable	424,756	468,229	(43,473)
Other Current Liabilities			
12020 · Lodging/Room Tax Payable	1,121	945	176
12100 · Payroll Liabilities	92,804	43,694	49,110
12200 · Due to other Funds	479	37,411	(36,932)
12250 · Deferred Revenue	105,497	170,736	(65,239)
12300 · Accrued Interest Payable	18,037	9,833	8,204
12350 · Current Portion-Long Term Debt	528,337	458,179	70,158
Total Other Current Liabilities	746,275	720,798	25,477
Total Current Liabilities	1,171,031	1,189,027	(17,996)

Port of Newport - General Operating Fund

Balance Sheet

As of October 31, 2018

	Oct 31, 18	Oct 31, 17	\$ Change
Long Term Liabilities			
12380 · 2013 FF&C Bond Premium	115,146	115,146	0
12400 · Long Term Debt	7,130,463	7,613,525	(483,062)
12900 · PERS - Deferred IF	109,947	109,947	0
Total Long Term Liabilities	7,355,556	7,838,618	(483,062)
Total Liabilities	8,526,587	9,027,645	(501,058)
Equity			
13000 · Fund Balance	64,765,578	67,022,657	(2,257,079)
13050 · FB - Contributed Capital	7,130,788	7,130,788	0
13210 · FB - Loan Proceeds	0	(35,303)	35,303
Net Income	336,111	344,531	(8,420)
Total Equity	72,232,477	74,462,673	(2,230,196)
TOTAL LIABILITIES & EQUITY	80,759,064	83,490,318	(2,731,254)

Port of Newport
Profit & Loss Budget vs. Actual
 July through October 2018

	<u>Jul - Oct 18</u>	<u>Budget</u>	<u>\$ Over Budget</u>	<u>% of Budget</u>
Ordinary Income/Expense				
Income				
14000 · Lease Revenues	237,786	687,000	-449,214	34.6%
14100 · Moorage	533,389	1,323,310	-789,921	40.3%
14200 · Hoist Dock & Services	233,545	661,370	-427,825	35.3%
14300 · Shipping Terminal Revenues	1,560	0	1,560	100.0%
14400 · RV Parks	556,927	960,000	-403,073	58.0%
14500 · Launch Ramp & Trailer Storage	41,331	112,200	-70,869	36.8%
14600 · Miscellaneous Revenue	51,580	132,020	-80,440	39.1%
Total Income	<u>1,656,118</u>	<u>3,875,900</u>	<u>-2,219,782</u>	<u>42.7%</u>
Gross Profit	1,656,118	3,875,900	-2,219,782	42.7%
Expense				
15000 · Personnel Services	463,622	1,530,000	-1,066,378	30.3%
16000 · Materials & Services	524,265	1,702,200	-1,177,935	30.8%
17000 · Debt Service	316,515	883,714	-567,199	35.8%
Total Expense	<u>1,304,401</u>	<u>4,115,914</u>	<u>-2,811,513</u>	<u>31.7%</u>
Net Ordinary Income	351,717	-240,014	591,731	-146.5%
Other Income/Expense				
Other Income				
18100 · Property Tax Revenue	1,585	102,000	-100,415	1.6%
18200 · Interest Income	3,329	8,000	-4,671	41.6%
18300 · Grants	1,800	88,050	-86,250	2.0%
18500 · Capital Contributions	0	34,500	-34,500	0.0%
18600 · Gain/(Loss) on Sale of Assets	-8,374			
18700 · Property & Dredge Sales	314	5,000	-4,686	6.3%
Total Other Income	<u>-1,345</u>	<u>237,550</u>	<u>-238,895</u>	<u>-0.6%</u>
Other Expense				
19000 · Capital Outlay	14,260	30,000	-15,740	47.5%
19600 · Contingency	0	150,000	-150,000	0.0%
19700 · Transfers Out to Other Funds	0	274,792	-274,792	0.0%
19902 · UEFB	0	1,271,962	-1,271,962	0.0%
Total Other Expense	<u>14,260</u>	<u>1,726,754</u>	<u>-1,712,494</u>	<u>0.8%</u>
Net Other Income	<u>-15,605</u>	<u>-1,489,204</u>	<u>1,473,599</u>	<u>1.0%</u>
Net Income	<u><u>336,111</u></u>	<u><u>-1,729,218</u></u>	<u><u>2,065,329</u></u>	<u><u>-19.4%</u></u>

Port of Newport - General Operating Fund
Profit & Loss Budget vs. Actual - Administration
 July through October 2018

	<u>Jul - Oct 18</u>	<u>Budget</u>	<u>\$ Over Budget</u>	<u>% of Budget</u>
Ordinary Income/Expense				
Income				
14000 · Lease Revenues	30,882	0	30,882	100%
14600 · Miscellaneous Revenue	6,489	34,800	(28,311)	19%
Total Income	<u>37,371</u>	<u>34,800</u>	<u>2,571</u>	<u>107%</u>
Gross Profit	37,371	34,800	2,571	107%
Expense				
15000 · Personnel Services	183,025	594,278	(411,253)	31%
16000 · Materials & Services	112,118	518,051	(405,933)	22%
17000 · Debt Service	4,473	121,350	(116,877)	4%
Total Expense	<u>299,616</u>	<u>1,233,679</u>	<u>(934,063)</u>	<u>24%</u>
Net Ordinary Income	(262,245)	(1,198,879)	936,634	22%
Other Income/Expense				
Other Income				
18100 · Property Tax Revenue	1,585	102,000	(100,415)	2%
18200 · Interest Income	3,329	8,000	(4,671)	42%
18500 · Capital Contributions	0	34,500	(34,500)	0%
Total Other Income	<u>4,914</u>	<u>144,500</u>	<u>(139,586)</u>	<u>3%</u>
Other Expense				
19600 · Contingency	0	150,000	(150,000)	0%
19700 · Transfers Out to Other Funds	0	274,792	(274,792)	0%
19902 · UEFB	0	1,271,962	(1,271,962)	0%
Total Other Expense	<u>0</u>	<u>1,696,754</u>	<u>(1,696,754)</u>	<u>0%</u>
Net Other Income	<u>4,914</u>	<u>(1,552,254)</u>	<u>1,557,168</u>	<u>(0%)</u>
Net Income	<u><u>(257,331)</u></u>	<u><u>(2,751,133)</u></u>	<u><u>2,493,802</u></u>	<u><u>9%</u></u>

Port of Newport - General Operating Fund
Profit & Loss Budget vs. Actual - International Terminal
 July through October 2018

	<u>Jul - Oct 18</u>	<u>Budget</u>	<u>\$ Over Budget</u>	<u>% of Budget</u>
Ordinary Income/Expense				
Income				
14100 · Moorage	25,600	100,000	(74,400)	26%
14200 · Hoist Dock & Services	98,010	314,600	(216,590)	31%
14300 · Shipping Terminal Revenues	1,560	0	1,560	100%
14600 · Miscellaneous Revenue	1,958	0	1,958	100%
Total Income	<u>127,128</u>	<u>414,600</u>	<u>(287,472)</u>	<u>31%</u>
Gross Profit	127,128	414,600	(287,472)	31%
Expense				
15000 · Personnel Services	27,434	74,623	(47,189)	37%
16000 · Materials & Services	51,668	143,702	(92,034)	36%
17000 · Debt Service	114,810	506,581	(391,771)	23%
Total Expense	<u>193,912</u>	<u>724,906</u>	<u>(530,994)</u>	<u>27%</u>
Net Ordinary Income	(66,784)	(310,306)	243,522	22%
Other Income/Expense				
Other Income				
18300 · Grants	0	86,250	(86,250)	0%
Total Other Income	<u>0</u>	<u>86,250</u>	<u>(86,250)</u>	<u>0%</u>
Other Expense				
19000 · Capital Outlay	1,200	0	1,200	100%
Total Other Expense	<u>1,200</u>	<u>0</u>	<u>1,200</u>	<u>100%</u>
Net Other Income	(1,200)	86,250	(87,450)	(1%)
Net Income	<u>(67,984)</u>	<u>(224,056)</u>	<u>156,072</u>	<u>30%</u>

Port of Newport - General Operating Fund
Profit & Loss Budget vs. Actual - Commercial Marina
 July through October 2018

	<u>Jul - Oct 18</u>	<u>Budget</u>	<u>\$ Over Budget</u>	<u>% of Budget</u>
Ordinary Income/Expense				
Income				
14100 · Moorage	182,152	454,800	(272,648)	40%
14200 · Hoist Dock & Services	130,804	339,150	(208,346)	39%
14600 · Miscellaneous Revenue	4,656	3,350	1,306	139%
Total Income	<u>317,612</u>	<u>797,300</u>	<u>(479,688)</u>	<u>40%</u>
Gross Profit	317,612	797,300	(479,688)	40%
Expense				
15000 · Personnel Services	101,428	282,245	(180,817)	36%
16000 · Materials & Services	89,295	326,200	(236,905)	27%
17000 · Debt Service	4,957	11,450	(6,493)	43%
Total Expense	<u>195,680</u>	<u>619,895</u>	<u>(424,215)</u>	<u>32%</u>
Net Ordinary Income	121,932	177,405	(55,473)	69%
Other Income/Expense				
Other Expense				
19000 · Capital Outlay	12,981	14,000	(1,019)	93%
Total Other Expense	<u>12,981</u>	<u>14,000</u>	<u>(1,019)</u>	<u>93%</u>
Net Other Income	<u>(12,981)</u>	<u>(14,000)</u>	<u>1,019</u>	<u>93%</u>
Net Income	<u><u>108,951</u></u>	<u><u>163,405</u></u>	<u><u>(54,454)</u></u>	<u><u>67%</u></u>

Port of Newport - General Operating Fund
Profit & Loss Budget vs. Actual - South Beach
 July through October 2018

	<u>Jul - Oct 18</u>	<u>Budget</u>	<u>\$ Over Budget</u>	<u>% of Budget</u>
Ordinary Income/Expense				
Income				
14100 · Moorage	321,982	768,510	(446,528)	42%
14200 · Hoist Dock & Services	2,992	7,620	(4,628)	39%
14400 · RV Parks	556,927	960,000	(403,073)	58%
14500 · Launch Ramp & Trailer Storage	41,331	112,200	(70,869)	37%
14600 · Miscellaneous Revenue	38,478	93,870	(55,392)	41%
Total Income	<u>961,710</u>	<u>1,942,200</u>	<u>(980,490)</u>	<u>50%</u>
Gross Profit	961,710	1,942,200	(980,490)	50%
Expense				
15000 · Personnel Services	131,364	423,826	(292,462)	31%
16000 · Materials & Services	270,073	714,247	(444,174)	38%
17000 · Debt Service	182,291	214,383	(32,092)	85%
Total Expense	<u>583,728</u>	<u>1,352,456</u>	<u>(768,728)</u>	<u>43%</u>
Net Ordinary Income	377,982	589,744	(211,762)	64%
Other Income/Expense				
Other Income				
18300 · Grants	1,800	1,800	0	100%
18600 · Gain/(Loss) on Sale of Assets	(8,374)			
18700 · Property & Dredge Sales	314	5,000	(4,686)	6%
Total Other Income	<u>(6,260)</u>	<u>6,800</u>	<u>(13,060)</u>	<u>(92%)</u>
Other Expense				
19000 · Capital Outlay	79	16,000	(15,921)	0%
Total Other Expense	<u>79</u>	<u>16,000</u>	<u>(15,921)</u>	<u>0%</u>
Net Other Income	<u>(6,339)</u>	<u>(9,200)</u>	<u>2,861</u>	<u>69%</u>
Net Income	<u><u>371,643</u></u>	<u><u>580,544</u></u>	<u><u>(208,901)</u></u>	<u><u>64%</u></u>

Port of Newport - General Operating Fund
Profit & Loss Budget vs. Actual - Maintenance Department
 July through October 2018

	<u>Jul - Oct 18</u>	<u>Budget</u>	<u>\$ Over Budget</u>	<u>% of Budget</u>
Ordinary Income/Expense				
Expense				
15000 · Personnel Services	20,370	155,028	(134,658)	13%
Total Expense	<u>20,370</u>	<u>155,028</u>	<u>(134,658)</u>	<u>13%</u>
Net Ordinary Income	<u>(20,370)</u>	<u>(155,028)</u>	<u>134,658</u>	<u>13%</u>
Net Income	<u><u>(20,370)</u></u>	<u><u>(155,028)</u></u>	<u><u>134,658</u></u>	<u><u>13%</u></u>

Port of Newport - General Operating Fund
Profit & Loss Budget vs. Actual - Leased Properties
 July through October 2018

	<u>Jul - Oct 18</u>	<u>Budget</u>	<u>\$ Over Budget</u>	<u>% of Budget</u>
Ordinary Income/Expense				
Income				
14000 · Lease Revenues	206,904	687,000	(480,096)	30%
14100 · Moorage	3,654	0	3,654	100%
14200 · Hoist Dock & Services	1,738	0	1,738	100%
Total Income	<u>212,296</u>	<u>687,000</u>	<u>(474,704)</u>	<u>31%</u>
Gross Profit	212,296	687,000	(474,704)	31%
Expense				
16000 · Materials & Services	1,111	0	1,111	100%
17000 · Debt Service	9,983	29,950	(19,967)	33%
Total Expense	<u>11,094</u>	<u>29,950</u>	<u>(18,856)</u>	<u>37%</u>
Net Ordinary Income	<u>201,202</u>	<u>657,050</u>	<u>(455,848)</u>	<u>31%</u>
Net Income	<u><u>201,202</u></u>	<u><u>657,050</u></u>	<u><u>(455,848)</u></u>	<u><u>31%</u></u>

Port of Newport - NOAA Fund

Balance Sheet

As of October 31, 2018

	<u>Oct 31, 18</u>	<u>Oct 31, 17</u>	<u>\$ Change</u>
ASSETS			
Current Assets			
Checking/Savings			
51000 · Cash & Equivalents	5,255,598	5,069,094	186,504
Total Checking/Savings	<u>5,255,598</u>	<u>5,069,094</u>	<u>186,504</u>
Other Current Assets			
51300 · Prepaid Expenses	45,130	26,394	18,736
51400 · Due from Other Funds	0	363	(363)
51480 · Net Pension Asset	(45,912)	(45,912)	0
51485 · PERS - Derfered OF	26,690	26,690	0
Total Other Current Assets	<u>25,908</u>	<u>7,535</u>	<u>18,373</u>
Total Current Assets	<u>5,281,506</u>	<u>5,076,629</u>	<u>204,877</u>
TOTAL ASSETS	<u><u>5,281,506</u></u>	<u><u>5,076,629</u></u>	<u><u>204,877</u></u>
LIABILITIES & EQUITY			
Liabilities			
Current Liabilities			
Accounts Payable			
52000 · Accounts Payable	4,214	14,428	(10,214)
Total Accounts Payable	<u>4,214</u>	<u>14,428</u>	<u>(10,214)</u>
Other Current Liabilities			
52105 · Accrued Payroll	712	0	712
52110 · Accrued PTO	6,413	8,330	(1,917)
52115 · Payroll Taxes & Deducts Payable	301	0	301
52200 · Due to Other Funds	15,268	6,962	8,306
52300 · Accrued Interest Payable	447,306	462,477	(15,171)
52350 · Current Portion Long-Term Debt	945,000	910,000	35,000
Total Other Current Liabilities	<u>1,415,000</u>	<u>1,387,769</u>	<u>27,231</u>
Total Current Liabilities	<u>1,419,214</u>	<u>1,402,197</u>	<u>17,017</u>
Long Term Liabilities			
52400 · Long-Term Debt	18,931,284	19,841,284	(910,000)
52800 · Less Current Portion LT Debt	(945,000)	(910,000)	(35,000)
52900 · PERS - Deferred IF	7,949	7,949	0
Total Long Term Liabilities	<u>17,994,233</u>	<u>18,939,233</u>	<u>(945,000)</u>
Total Liabilities	<u>19,413,447</u>	<u>20,341,430</u>	<u>(927,983)</u>
Equity			
53000 · Fund Balance	(13,397,667)	(14,534,551)	1,136,884
Net Income	(734,273)	(730,250)	(4,023)
Total Equity	<u>(14,131,940)</u>	<u>(15,264,801)</u>	<u>1,132,861</u>
TOTAL LIABILITIES & EQUITY	<u><u>5,281,507</u></u>	<u><u>5,076,629</u></u>	<u><u>204,878</u></u>

Port of Newport - NOAA Fund
Profit & Loss Budget vs. Actual
 July through October 2018

	<u>Jul - Oct 18</u>	<u>Budget</u>	<u>\$ Over Budget</u>	<u>% of Budget</u>
Ordinary Income/Expense				
Income				
54000 · Lease Revenue	848,220	2,544,000	(1,695,780)	33%
Total Income	<u>848,220</u>	<u>2,544,000</u>	<u>(1,695,780)</u>	<u>33%</u>
Expense				
55000 · Personnel Services	25,285	78,306	(53,021)	32%
56000 · Materials & Services	85,796	750,500	(664,704)	11%
57000 · Debt Service	1,481,767	1,997,271	(515,504)	74%
Total Expense	<u>1,592,848</u>	<u>2,826,077</u>	<u>(1,233,229)</u>	<u>56%</u>
Net Ordinary Income	(744,628)	(282,077)	(462,551)	264%
Other Income/Expense				
Other Income				
58200 · Interest Income	5,674	12,000	(6,326)	47%
58800 · Miscellaneous Revenue	4,680	950	3,730	493%
Total Other Income	<u>10,354</u>	<u>12,950</u>	<u>(2,596)</u>	<u>80%</u>
Other Expense				
59000 · Capital Outlay	0	86,000	(86,000)	0%
59600 · Contingency	0	100,000	(100,000)	0%
59900 · Reserved for Future Expenditure	0	150,000	(150,000)	0%
59902 · UEFB	0	5,113,023	(5,113,023)	0%
Total Other Expense	<u>0</u>	<u>5,449,023</u>	<u>(5,449,023)</u>	<u>0%</u>
Net Other Income	<u>10,354</u>	<u>(5,436,073)</u>	<u>5,446,427</u>	<u>(0%)</u>
Net Income	<u><u>(734,274)</u></u>	<u><u>(5,718,150)</u></u>	<u><u>4,983,876</u></u>	<u><u>13%</u></u>

Facility Maintenance Reserve Fund

Balance Sheet

As of October 31, 2018

	Oct 31, 18	Oct 31, 17
ASSETS		
Current Assets		
Checking/Savings		
31000 - Cash & Cash Equivalents		
31060 - FMR Money Market - Umpqua Bank	131,112.34	72,359.32
Total 31000 - Cash & Cash Equivalents	131,112.34	72,359.32
Total Checking/Savings	131,112.34	72,359.32
Total Current Assets	131,112.34	72,359.32
TOTAL ASSETS	131,112.34	72,359.32
LIABILITIES & EQUITY		
Liabilities		
Current Liabilities		
Accounts Payable		
32000 - Accounts Payable	32,208.50	22,603.31
Total Accounts Payable	32,208.50	22,603.31
Total Current Liabilities	32,208.50	22,603.31
Total Liabilities	32,208.50	22,603.31
Equity		
33000 - Fund Balance	31,045.25	22,322.76
33020 - FB - Assigned for Future Expend	100,000.00	50,000.00
Net Income	-32,141.41	-22,566.75
Total Equity	98,903.84	49,756.01
TOTAL LIABILITIES & EQUITY	131,112.34	72,359.32

Facility Maintenance Reserve Fund
Profit & Loss Budget vs. Actual
 July through October 2018

	<u>Jul - Oct 18</u>	<u>Budget</u>	<u>\$ Over Budget</u>	<u>% of Budget</u>
Other Income/Expense				
Other Income				
38200 · Interest Income	67.09	100.00	-32.91	67.09%
38900 · Transfers In				
38902 · Transfers In from General Fund	0.00	264,792.00	-264,792.00	0.0%
Total 38900 · Transfers In	<u>0.00</u>	<u>264,792.00</u>	<u>-264,792.00</u>	<u>0.0%</u>
Total Other Income	67.09	264,892.00	-264,824.91	0.03%
Other Expense				
39000 · Capital Outlay				
39303 · PD5 Pier Engineering	30,985.50	86,625.00	-55,639.50	35.77%
39306 · PD5 & 7 Pile Replacement	1,223.00	120,000.00	-118,777.00	1.02%
39307 · Fuel Dock Solenoid Valve	0.00	15,000.00	-15,000.00	0.0%
39308 · Electric Load Centers - RM	0.00	38,000.00	-38,000.00	0.0%
39000 · Capital Outlay - Other	0.00	0.00	0.00	0.0%
Total 39000 · Capital Outlay	<u>32,208.50</u>	<u>259,625.00</u>	<u>-227,416.50</u>	<u>12.41%</u>
39600 · Contingency	0.00	10,000.00	-10,000.00	0.0%
39900 · Reserved for Future Expenditure	0.00	50,000.00	-50,000.00	0.0%
Total Other Expense	<u>32,208.50</u>	<u>319,625.00</u>	<u>-287,416.50</u>	<u>10.08%</u>
Net Other Income	<u>-32,141.41</u>	<u>-54,733.00</u>	<u>22,591.59</u>	<u>58.72%</u>
Net Income	<u><u>-32,141.41</u></u>	<u><u>-54,733.00</u></u>	<u><u>22,591.59</u></u>	<u><u>58.72%</u></u>

Construction Fund - Port of Newport

Balance Sheet

As of October 31, 2018

	Oct 31, 18	Oct 31, 17
ASSETS		
Current Assets		
Checking/Savings		
41000 - Cash & Cash Equivalents		
41070 - Construction Checking - OCB	11,152.65	21,296.69
41075 - Construction Money Market - OCB	30,837.65	30,698.15
Total 41000 - Cash & Cash Equivalents	41,990.30	51,994.84
Total Checking/Savings	41,990.30	51,994.84
Total Current Assets	41,990.30	51,994.84
TOTAL ASSETS	41,990.30	51,994.84
LIABILITIES & EQUITY		
Liabilities		
Current Liabilities		
Accounts Payable		
42000 - Accounts Payable	0.00	2,390.00
Total Accounts Payable	0.00	2,390.00
Other Current Liabilities		
42200 - Due To Other funds	0.00	3,440.42
Total Other Current Liabilities	0.00	3,440.42
Total Current Liabilities	0.00	5,830.42
Total Liabilities	0.00	5,830.42
Equity		
43000 - Fund Balance	41,932.10	52,839.66
Net Income	58.20	-6,675.24
Total Equity	41,990.30	46,164.42
TOTAL LIABILITIES & EQUITY	41,990.30	51,994.84

**Construction Fund - Port of Newport
Profit & Loss Budget vs. Actual
July through October 2018**

	Jul - Oct 18	Budget	\$ Over Budget	% of Budget
Ordinary Income/Expense				
Expense	0.00	0.00	0.00	0.0%
Net Ordinary Income	0.00	0.00	0.00	0.0%
Other Income/Expense				
Other Income				
48200 · Interest Income	58.20	120.00	-61.80	48.5%
48900 · Transfers In from Other Funds				
48902 · Transfers In from General Fund	0.00	10,000.00	-10,000.00	0.0%
Total 48900 · Transfers In from Other Funds	0.00	10,000.00	-10,000.00	0.0%
Total Other Income	58.20	10,120.00	-10,061.80	0.6%
Other Expense				
49000 · Capital Outlay				
49500 · Rogue Brewery Seawall Eval	0.00	10,000.00	-10,000.00	0.0%
49501 · RV Park Annex Upgarde	0.00	18,000.00	-18,000.00	0.0%
49000 · Capital Outlay - Other	0.00	0.00	0.00	0.0%
Total 49000 · Capital Outlay	0.00	28,000.00	-28,000.00	0.0%
49600 · Contingency	0.00	10,000.00	-10,000.00	0.0%
49900 · Unappropriated Ending FB	0.00	16,175.00	-16,175.00	0.0%
Total Other Expense	0.00	54,175.00	-54,175.00	0.0%
Net Other Income	58.20	-44,055.00	44,113.20	-0.1%
Net Income	58.20	-44,055.00	44,113.20	-0.1%

Port of Newport - Bonded Debt Fund
Balance Sheet
As of October 31, 2018

	<u>Oct 31, 18</u>	<u>Oct 31, 17</u>	<u>\$ Change</u>
ASSETS			
Current Assets			
Checking/Savings			
21000 · Cash & Cash Equivalents	372,159	260,945	111,214
Total Checking/Savings	<u>372,159</u>	<u>260,945</u>	<u>111,214</u>
Other Current Assets			
21270 · Property Tax Receivable	86,925	86,925	0
21400 · Due from Other Funds	0	37,048	(37,048)
Total Other Current Assets	<u>86,925</u>	<u>123,973</u>	<u>(37,048)</u>
Total Current Assets	<u>459,084</u>	<u>384,918</u>	<u>74,166</u>
Other Assets			
21800 · Bond Issue costs, net of amor	2,916	2,916	0
21825 · Advance Refunding Valuation	416,150	416,150	0
Total Other Assets	<u>419,066</u>	<u>419,066</u>	<u>0</u>
TOTAL ASSETS	<u><u>878,150</u></u>	<u><u>803,984</u></u>	<u><u>74,166</u></u>
LIABILITIES & EQUITY			
Liabilities			
Current Liabilities			
Other Current Liabilities			
22350 · Bonds Payable - Current	340,000	325,000	15,000
Total Other Current Liabilities	<u>340,000</u>	<u>325,000</u>	<u>15,000</u>
Total Current Liabilities	<u>340,000</u>	<u>325,000</u>	<u>15,000</u>
Long Term Liabilities			
22510 · 2008 Series Bonds	0	125,000	(125,000)
22515 · 2011 Series Bonds	5,018,669	5,083,669	(65,000)
22520 · 2016 Series Bonds	7,320,000	7,455,000	(135,000)
22590 · Bond Premiums	838,806	838,806	0
22800 · Less Current Portion LTD	(340,000)	(325,000)	(15,000)
Total Long Term Liabilities	<u>12,837,475</u>	<u>13,177,475</u>	<u>(340,000)</u>
Total Liabilities	<u>13,177,475</u>	<u>13,502,475</u>	<u>(325,000)</u>
Equity			
23000 · Fund Balance	(12,314,927)	(12,749,003)	434,076
Net Income	<u>15,603</u>	<u>50,512</u>	<u>(34,909)</u>
Total Equity	<u>(12,299,324)</u>	<u>(12,698,491)</u>	<u>399,167</u>
TOTAL LIABILITIES & EQUITY	<u><u>878,151</u></u>	<u><u>803,984</u></u>	<u><u>74,167</u></u>

**Bonded Debt Fund - Port of Newport
Profit & Loss Budget vs. Actual
July through October 2018**

	<u>Jul - Oct 18</u>	<u>Budget</u>	<u>\$ Over Budget</u>	<u>% of Budget</u>
Ordinary Income/Expense				
Income				
28100 · Bond Levy Proceeds				
28110 · Current Year	0.00	488,455.00	-488,455.00	0.0%
28120 · Prior Years	14,822.35	25,000.00	-10,177.65	59.29%
28130 · Interest	18.52	0.00	18.52	100.0%
Total 28100 · Bond Levy Proceeds	<u>14,840.87</u>	<u>513,455.00</u>	<u>-498,614.13</u>	<u>2.89%</u>
Total Income	<u>14,840.87</u>	<u>513,455.00</u>	<u>-498,614.13</u>	<u>2.89%</u>
Gross Profit	14,840.87	513,455.00	-498,614.13	2.89%
Expense				
27000 · Debt Service				
27100 · Principal				
27415 · 2011 GO Bond Principal	0.00	70,000.00	-70,000.00	0.0%
27420 · 2016 GO Bond Principal	0.00	270,000.00	-270,000.00	0.0%
Total 27100 · Principal	<u>0.00</u>	<u>340,000.00</u>	<u>-340,000.00</u>	<u>0.0%</u>
27600 · Interest Expense				
27915 · 2011 GO Bond Interest	0.00	267,055.00	-267,055.00	0.0%
27920 · 2016 GO Bond Interest	0.00	273,900.00	-273,900.00	0.0%
Total 27600 · Interest Expense	<u>0.00</u>	<u>540,955.00</u>	<u>-540,955.00</u>	<u>0.0%</u>
Total 27000 · Debt Service	<u>0.00</u>	<u>880,955.00</u>	<u>-880,955.00</u>	<u>0.0%</u>
Total Expense	<u>0.00</u>	<u>880,955.00</u>	<u>-880,955.00</u>	<u>0.0%</u>
Net Ordinary Income	14,840.87	-367,500.00	382,340.87	-4.04%
Other Income/Expense				
Other Income				
28200 · Bank Interest Income	761.96	1,800.00	-1,038.04	42.33%
Total Other Income	<u>761.96</u>	<u>1,800.00</u>	<u>-1,038.04</u>	<u>42.33%</u>
Other Expense				
29902 · UEFB	0.00	30,000.00	-30,000.00	0.0%
Total Other Expense	<u>0.00</u>	<u>30,000.00</u>	<u>-30,000.00</u>	<u>0.0%</u>
Net Other Income	761.96	-28,200.00	28,961.96	-2.7%
Net Income	<u><u>15,602.83</u></u>	<u><u>-395,700.00</u></u>	<u><u>411,302.83</u></u>	<u><u>-3.94%</u></u>



Operating Fund
October 18, 2018 through November 15, 2018

Date	Num	Name	Memo	Class	Amount
11/01/2018	40536	151 Co	Lighting upgrade - LED high output wall mount and part E-WW3 series		
10/19/2018	1920		Lighting upgrade - LED high output wall mount and part E-WW3 series	South Beach:SB Operations	-3,547.00
					<u>-3,547.00</u>
11/01/2018	40537	Advance Backflow Testing LLC			
09/27/2018	3961		Backflow testing and repair - SB	South Beach:SB Operations	-626.95
09/27/2018	3960		Backflow testing - CM	Commercial Marina	-125.00
09/27/2018	3959		Backflow testing - NIT	International Terminal	-75.00
					<u>-826.95</u>
11/01/2018	40538	Airgas USA LLC	Filling oxygen tanks		
10/09/2018	9081180612		Filling oxygen tanks (Maint) - SB Admin	South Beach:SB Admin & Overhead	-4.20
			Filling oxygen tanks (Maint) - SB Ops	South Beach:SB Operations	-8.40
			Filling oxygen tanks (Maint) - CM	Commercial Marina	-16.79
			Filling oxygen tanks (Maint) - NIT	International Terminal	-8.40
			Filling oxygen tanks (Maint) - LP	Leased Properties	-4.20
					<u>-41.99</u>
11/01/2018	40539	Amazon Capital Services Inc			
10/13/2018	1Y71-361H-X93X		Coveralls (Maint) - SB Admin	South Beach:SB Admin & Overhead	-7.70
			Shipping (Maint) - SB Admin	South Beach:SB Admin & Overhead	-0.87
			Coveralls (Maint) - SB Ops	South Beach:SB Operations	-15.40
			Shipping (Maint) - SB Ops	South Beach:SB Operations	-1.74
			Coveralls (Maint) - CM	Commercial Marina	-30.78
			Shipping (Maint) - CM	Commercial Marina	-3.48
			Coveralls (Maint) - NIT	International Terminal	-15.40
			Shipping (Maint) - NIT	International Terminal	-1.74
			Coveralls (Maint) - LP	Leased Properties	-7.70
			Shipping (Maint) - LP	Leased Properties	-0.87
			Coveralls	International Terminal	-35.99
			Shipping	International Terminal	-8.71
10/24/2018	1MMC-3CYX-YN6X		Office supplies and printing calculator	Administration	-154.72
					<u>-285.10</u>



**Operating Fund
October 18, 2018 through November 15, 2018**

Date	Num	Name	Memo	Class	Amount
11/01/2018	40540	Business Oregon - OBDD	Loan 655-36-02, Q10001 November 2018		
10/17/2018	655-36-02Q1001 11-18		Loan 655-36-02, Q10001 November 2018 - Pricipal	International Terminal	-5,130.28
			Loan 655-36-02, Q10001 November 2018 - Interest	International Terminal	<u>-2,669.72</u>
					-7,800.00
11/01/2018	40541	CFO Selections LLC	Professional services per contract		
08/29/2018	31051		Professional services per contract	Administration	<u>-2,512.50</u>
					-2,512.50
11/01/2018	40542	Coastal Paper & Supply Inc			
10/02/2018	549593		Paper products and cleaning supplies	South Beach:SB Operations	-453.00
			Freight	South Beach:SB Operations	-4.00
10/09/2018	549964		Paper products and cleaning supplies	South Beach:SB Operations	-493.86
			Freight	South Beach:SB Operations	-4.00
10/16/2018	550271		Paper products and cleaning supplies	South Beach:SB Operations	-390.21
			Freight	South Beach:SB Operations	-4.00
10/23/2018	550594		Paper products and cleaning supplies	South Beach:SB Operations	-453.09
			Freight	South Beach:SB Operations	-4.00
10/30/2018	550885		Paper products and cleaning supplies	South Beach:SB Operations	-465.36
			Freight	South Beach:SB Operations	<u>-4.00</u>
					-2,275.52
11/01/2018	40543	Department of Environmental Quality	T27036-00 - Sept. memo/NFA applicability and file review for Fuel Dock cleanup 2014		
10/20/2018	USTC19-0234		T27036-00 - Sept. memo/NFA applicability and file review for Fuel Dock cleanup 2014	South Beach:SB Marina	<u>-275.76</u>
					-275.76
11/01/2018	40544	Design Space	Customs Office		
10/19/2018	1051909		Customs office rental	Administration	<u>-217.00</u>
					-217.00
11/01/2018	40545	Fastenal Company			
10/19/2018	ORNEW131272		Countersink tool (Maint) - SB Admin	South Beach:SB Admin & Overhead	-4.18
			Countersink tool (Maint) - SB Ops	South Beach:SB Operations	-8.36
			Countersink tool (Maint) - CM	Commercial Marina	-16.72
			Countersink tool (Maint) - NIT	International Terminal	-8.36
			Countersink tool (Maint) - LP	Leased Properties	-4.18
10/22/2018	ORNEW131280		PD5 hoist dock handrail and repair supplies	Commercial Marina	-119.31
10/23/2018	ORNEW131322		Epoxy tube for PD5 hoist dock handrail repair	Commercial Marina	<u>-14.99</u>
					-176.10



Operating Fund
October 18, 2018 through November 15, 2018

Date	Num	Name	Memo	Class	Amount
11/01/2018	40546	Fred Meyer Customer Charges			
08/30/2018	12254		Printer ink - black and color	South Beach:SB Operations	-119.97
09/05/2018	12275		Stereo for shop	International Terminal	-129.99
					<u>-249.96</u>
11/01/2018	40547	G & K Floors	Janitorial services - Port office, SB and customs trailer		
10/22/2018	110118		Janitorial Services - SB	South Beach:SB Admin & Overhead	-1,880.00
			Janitorial Services - Customs Trailer	Administration	-120.00
			Janitorial - Port Office	Administration	-200.00
					<u>-2,200.00</u>
11/01/2018	40548	Greater Newport Chamber of Commerce	Treasures of the Sea 2018		
10/15/2018	98820		Treasures of the Sea 2018	South Beach:SB Admin & Overhead	-135.00
					<u>-135.00</u>
11/01/2018	40549	Lincoln Plumbing Inc	Snaking out men's marina shower drains		
10/17/2018	17281		Snaking out men's marina shower drains	South Beach:SB Operations	-230.00
					<u>-230.00</u>
11/01/2018	40550	McKay Truck, Trailer & RV	Replace dump truck transmission		
10/18/2018	347S310759		Replace dump truck transmission (Maint) - SB Admin	South Beach:SB Admin & Overhead	-594.27
			Replace dump truck transmission (Maint) - SB Ops	South Beach:SB Operations	-1,188.54
			Replace dump truck transmission (Maint) - CM	Commercial Marina	-2,377.09
			Replace dump truck transmission (Maint) - NIT	International Terminal	-1,188.54
			Replace dump truck transmission (Maint) - LP	Leased Properties	-594.27
					<u>-5,942.71</u>
11/01/2018	40551	Newport Marine & RV Service Inc	Weld-on coupler for boat trailer 80131		
10/16/2018	171108		Weld-on coupler for boat trailer 80131	Commercial Marina	-90.00
					<u>-90.00</u>
11/01/2018	40552	Newport Signs	Launch ramp ends warning signs		
10/17/2018	9576		Launch ramp ends warning signs	South Beach:SB Operations	-104.00
					<u>-104.00</u>
11/01/2018	40553	NW Natural			
10/16/2018	1584561-3 10-18		SB Gas - Shop	South Beach:SB Operations	-25.55
10/16/2018	1584562-1 10-18		SB Gas	South Beach:Main RV Park	-121.64
					<u>-147.19</u>
11/01/2018	40554	OBEC Consulting Engineers	PD5 pier approach project engineering - final design - 9/18		
10/16/2018	35366		PD5 pier approach project engineering - final design - 9/18	Commercial Marina	-23,026.50
					<u>-23,026.50</u>



Operating Fund
October 18, 2018 through November 15, 2018

Date	Num	Name	Memo	Class	Amount
11/01/2018	40555	T & L Septic Tank Service			
09/26/2018	144127		Chemical toilet rental - SB South Restroom	South Beach:SB Operations	-80.00
09/26/2018	144128		Chemical toilet rental - SB Dry Camp	South Beach:SB Operations	-160.00
09/26/2018	144129		Chemical toilets - Bayfront	Commercial Marina	-236.00
09/26/2018	144130		Chemical toilets - Bayfront	Commercial Marina	-250.00
					<u>-726.00</u>
11/01/2018	40556	TCB Security Services Inc.	Monthly security contract		
10/29/2018	226093		Monthly security contract - SB Marina	South Beach:SB Marina	-1,852.64
			Monthly security contract - SB RV	South Beach:Main RV Park	-1,852.64
			Monthly security contract - CM	Commercial Marina	-1,852.64
			Monthly security contract - NIT	International Terminal	-958.08
					<u>-6,516.00</u>
11/01/2018	40557	TWGW Inc NAPA Auto Parts	Case of grease		
10/24/2018	865-699578		Case of grease	International Terminal	-27.90
					<u>-27.90</u>
11/01/2018	40558	Umpqua Bank Vendor Finance	2017 NIT Forklift		
10/15/2018	4874091		2017 NIT Forklift - Principal	International Terminal	-819.07
			2017 NIT Forklift - Interest	International Terminal	-206.93
					<u>-1,026.00</u>
11/01/2018	40559	Verizon Wireless	Port cell phones and mifi		
10/12/2018	9816383499		Monthly cell phone - Admin	Administration	-634.11
			Monthly cell phone - CM	Commercial Marina	-32.76
			Monthly cell phone - NIT	International Terminal	-16.38
			Monthly cell phone - SB	South Beach:SB Operations	-65.92
			Monthly mifi - SB Admin	South Beach:SB Admin & Overhead	-10.02
			Monthly cell phone plan - Admin	Administration	-136.50
			Monthly cell phone (Maint) - SB Admin	South Beach:SB Admin & Overhead	-7.26
			Monthly cell phone (Maint) - SB Ops	South Beach:SB Operations	-14.52
			Monthly cell phone (Maint) - CM	Commercial Marina	-29.06
			Monthly cell phone (Maint) - NIT	International Terminal	-14.52
			Monthly cell phone (Maint) - LP	Leased Properties	-7.26
					<u>-968.31</u>
11/15/2018	40560	Chinook Bend RV Resort			
04/02/2018	Credit		Refund: concrete - 39 invoiced, only 29 received	International Terminal	-296.50
					<u>-296.50</u>



Operating Fund
October 18, 2018 through November 15, 2018

Date	Num	Name	Memo	Class	Amount
11/15/2018	40561	4C's Environmental Inc	Replace fuel dock solenoid valve		
11/06/2018	3025		Replace fuel dock solenoid valve	South Beach:SB Operations	-6,452.70
					<u>-6,452.70</u>
11/15/2018	40562	ACE Hardware	Screwdrivers, wrenches and sheet rock square		
11/02/2018	61/1		Screwdrivers, wrenches and sheet rock square (Maint) - SB Admin	South Beach:SB Admin & Overhead	-13.30
			Screwdrivers, wrenches and sheet rock square (Maint) - SB Ops	South Beach:SB Operations	-26.59
			Screwdrivers, wrenches and sheet rock square (Maint) - CM	Commercial Marina	-53.19
			Screwdrivers, wrenches and sheet rock square (Maint) - NIT	International Terminal	-26.59
			Screwdrivers, wrenches and sheet rock square (Maint) - LP	Leased Properties	-13.30
					<u>-132.97</u>
11/15/2018	40563	Airgas USA LLC			
10/08/2018	9081783050		Bottle of CO2/Argon gas (Maint) - SB Admin	South Beach:SB Admin & Overhead	-10.63
			Bottle of CO2/Argon gas (Maint) - SB Ops	South Beach:SB Operations	-21.26
			Bottle of CO2/Argon gas (Maint) - CM	Commercial Marina	-42.51
			Bottle of CO2/Argon gas (Maint) - NIT	International Terminal	-21.26
			Bottle of CO2/Argon gas (Maint) - LP	Leased Properties	-10.63
10/22/2018	9081783052		Bottle of Argon gas (Maint) - SB Admin	South Beach:SB Admin & Overhead	-28.16
			Bottle of Argon gas (Maint) - SB Ops	South Beach:SB Operations	-56.32
			Bottle of Argon gas (Maint) - CM	Commercial Marina	-112.62
			Bottle of Argon gas (Maint) - NIT	International Terminal	-56.32
			Bottle of Argon gas (Maint) - LP	Leased Properties	-28.16
10/22/2018	9081783051		Aluminum spool gun and roll of wire (Maint) - SB Admin	South Beach:SB Admin & Overhead	-37.94
			Aluminum spool gun and roll of wire (Maint) - SB Ops	South Beach:SB Operations	-75.88
			Aluminum spool gun and roll of wire (Maint) - CM	Commercial Marina	-151.75
			Aluminum spool gun and roll of wire (Maint) - NIT	International Terminal	-75.88
			Aluminum spool gun and roll of wire (Maint) - LP	Leased Properties	-37.94
					<u>-767.26</u>



Operating Fund
October 18, 2018 through November 15, 2018

Date	Num	Name	Memo	Class	Amount
11/15/2018	40564	Alsco			
10/03/2018	LPOR2194016		Shop Towels, Shirt, Mats	Administration	-33.97
10/05/2018	LPOR2195749		SB Mats	South Beach:SB Admin & Overhead	-58.99
10/10/2018	LPOR2198037		Shop Towels, Shirt, Mats	Administration	-33.97
10/12/2018	LPOR2199708		SB Mats	South Beach:SB Admin & Overhead	-58.99
10/17/2018	LPOR2202011		Shop Towels, Shirt, Mats	Administration	-33.97
10/19/2018	LPOR2203704		SB Mats	South Beach:SB Admin & Overhead	-58.99
10/24/2018	LPOR2206120		Shop Towels, Shirt, Mats	Administration	-33.97
10/26/2018	LPOR2207884		SB Mats	South Beach:SB Admin & Overhead	-58.99
10/31/2018	LPOR2210208		Shop Towels, Shirt, Mats	Administration	-33.97
					<u>-405.81</u>
11/15/2018	40565	Amazon Capital Services Inc			
11/07/2018	1GDJ-4GJW-CH3C		Office supplies	Administration	-72.42
11/07/2018	1XD3-D6FY-KX17		Acer Aspire E15 laptop	South Beach:SB Operations	-378.00
11/07/2018	14NR-W741-3JXF		Bottled water and hand soap	Administration	-142.64
					<u>-593.06</u>
11/15/2018	40566	Barrelhead Supply Inc			
10/10/2018	258160		Toilet fill valve	South Beach:SB Operations	-12.99
10/10/2018	258162		Toilet lever	South Beach:SB Operations	-4.99
10/23/2018	258868		Electrical conduit and wire nuts for RV Park site posts	South Beach:SB Operations	-18.54
					<u>-36.52</u>
11/15/2018	40567	BergerABAM Inc	Project Management - Strategic Business Plan		
10/30/2018	324555		Project Management - Strategic Business Plan	Administration	-1,543.44
					<u>-1,543.44</u>
11/15/2018	40568	Builders FirstSource Inc	PVC downspout for CM restrooms		
10/24/2018	609-69183875		PVC downspout for CM restrooms	Commercial Marina	-11.99
					<u>-11.99</u>
11/15/2018	40569	Business Oregon - IFA			
11/01/2018	L00012 2018-19		Loan L00012 (12/1/18) - Principal	International Terminal	-5,004.72
			Loan L00012 (12/1/18) - Interest	International Terminal	-2,515.28
11/14/2018	520161 10/18		Loan 520161 - Principal	Administration	-4,268.05
			Loan 520161 - Interest	Administration	-194.95
					<u>-11,983.00</u>



**Operating Fund
October 18, 2018 through November 15, 2018**

Date	Num	Name	Memo	Class	Amount
11/15/2018	40570	Business Oregon - OBDD	Loan 655-36-02, Q10001 December 2018		
11/07/2018	655-36-02Q1001 12-18		Loan 655-36-02, Q10001 December 2018 - Principal	International Terminal	-5,229.00
			Loan 655-36-02, Q10001 December 2018 - Interest	International Terminal	<u>-2,571.00</u>
					-7,800.00
11/15/2018	40571	Carquest Auto Parts			
10/15/2018	2903-ID-284569		Hose fitting for air tank repair	International Terminal	-7.98
10/15/2018	2903-ID-284571		Hose for air tank repair	International Terminal	<u>-19.99</u>
					-27.97
11/15/2018	40572	Carson Oil Co Inc	Fuel - CM		
10/31/2018	CP-00164128		Fuel - CM	Commercial Marina	<u>-322.27</u>
					-322.27
11/15/2018	40573	Century Link			
11/05/2018	5412657758840B-11/18		Telephone-Monthly Charges Acct #541-265-7758 840B	Administration	-208.17
11/05/2018	5412659651245B-11/18		Telephone-Monthly Charges Acct #541-265-9651 245B	International Terminal	<u>-198.14</u>
					-406.31
11/15/2018	40574	CenturyLink - Business Service	Telephone		
10/31/2018	1454140863		Telephone	Administration	<u>-47.64</u>
					-47.64
11/15/2018	40575	Chase - Visa			
10/05/2018	Best Western Holiday	Chase - Visa	Lodging for T Dresler - OPPA Annual Conference		0.00
10/05/2018	Best Western Holiday	Chase - Visa	Lodging for A Bretz - OPPA Annual Conference		0.00
10/11/2018	Identogo/Universal	Chase - Visa	TWIC credentials - A Bretz		0.00
10/15/2018	Domino's Pizza	Chase - Visa	Lunch for commission meeting		0.00
10/23/2018	OSU Extension		State of the Coast conference	Administration	-9.10
10/24/2018	Forinash Gallery		Retirement gift - B Farmer	Administration	-155.00
10/25/2018	Domino's Pizza		Lunch for safety committee meeting	Administration	-36.80
11/03/2018	Adobe Acrobat Pro	Chase - Visa	Adobe Acrobat Pro software renewal		<u>0.00</u>
					-200.90
11/15/2018	40576	City of Newport Room Tax	Transient room tax - Oct 2018		
10/31/2018	Oct 2018 Room Tax		Transient room tax - Oct 2018	South Beach:Main RV Park	<u>-6,121.66</u>
					-6,121.66
11/15/2018	40577	City of Newport Water/Sewer			
10/31/2018	94861.00-10-18		Water G & H docks	South Beach:SB Marina	-318.55
10/31/2018	172421.00-10-18		Water/sewer RV dump new	South Beach:Main RV Park	<u>-75.35</u>
					-393.90



Operating Fund
October 18, 2018 through November 15, 2018

Date	Num	Name	Memo	Class	Amount
11/15/2018	40578	Dahl & Dahl Inc			
10/18/2018	226784		Take load of debris to dump	Commercial Marina	-275.40
10/23/2018	227067		Take load of pallets to dump	Commercial Marina	-168.00
					<u>-443.40</u>
11/15/2018	40579	Department of Environmental Quality	21-0077-22-01 Air Quality ACDP - Cleaner Air Oregon Fee SB 010119-123119		
11/02/2018	AQCAO19-2299		21-0077-22-01 Air Quality ACDP - Cleaner Air Oregon Fee SB 010119-123119	South Beach:SB Operations	-35.00
					<u>-35.00</u>
11/15/2018	40580	Design Space	Temporary office rental		
11/09/2018	1055285		Temporary office rental	Administration	-877.00
					<u>-877.00</u>
11/15/2018	40581	Direct TV			
10/26/2018	35323704955		Cable SB RV Park	South Beach:Main RV Park	-879.69
10/30/2018	35345381474		Monthly Cable SB Annex	South Beach:Annex	-568.81
					<u>-1,448.50</u>
11/15/2018	40582	Englund Marine Supply Co Inc			
10/01/2018	899666		Hoses, tie wraps, fittings for forklift	Commercial Marina	-200.66
10/08/2018	750100		Rain gear - L Hildenbrand & K Corwin	Commercial Marina	-438.01
10/08/2018	750103		Rain boots - E Swanson	South Beach:SB Operations	-76.30
10/16/2018	750374		Air fittings for air tank	International Terminal	-9.36
10/19/2018	750504		Lag bolt for PD5 transition	Commercial Marina	-1.45
			Flashlight (Maint) - SB Admin	South Beach:SB Admin & Overhead	-2.10
			Flashlight (Maint) - SB Ops	South Beach:SB Operations	-4.20
			Flashlight (Maint) - CM	Commercial Marina	-8.39
			Flashlight (Maint) - NIT	International Terminal	-4.20
			Flashlight (Maint) - LP	Leased Properties	-2.10
10/26/2018	750777		Rain gear - S Cronin	Commercial Marina	-218.44
					<u>-965.21</u>
11/15/2018	40583	Fidelis Screening Solutions	Background checks		
11/01/2018	4520		Background checks	South Beach:SB Admin & Overhead	-403.65
					<u>-403.65</u>
11/15/2018	40584	Halco Welding Inc			
10/31/2018	69624		10' each 3/4" pipe and hot roll for PD5 transition	Commercial Marina	-32.00
10/31/2018	69695		Aluminum for launch ramp sign brackets	South Beach:SB Operations	-142.00
					<u>-174.00</u>



Operating Fund
October 18, 2018 through November 15, 2018

Date	Num	Name	Memo	Class	Amount
11/15/2018	40585	Industrial Welding Supply Inc			
10/11/2018	996784		Die-grinder bits and welding wire for wire-feed welder	South Beach:SB Operations	-96.27
10/17/2018	997421		Replacement gate hinges for OSP dock	South Beach:SB Operations	-74.00
			UPS 2nd Day Air	South Beach:SB Operations	-23.00
					<u>-193.27</u>
11/15/2018	40586	John Reis	Moorage refund - cancellation of annual moorage due to leak on boat		
11/01/2018	7267482		Moorage refund - cancellation of annual moorage due to leak on boat	South Beach:SB Marina	-1,340.00
					<u>-1,340.00</u>
11/15/2018	40587	Lance P Stimely	Diving and video of A dock ramp float dock brackets installation		
11/06/2018	6981-8		Diving and video of A dock ramp float dock brackets installation	South Beach:SB Operations	-300.00
					<u>-300.00</u>
11/15/2018	40588	Lincoln County Public Works	Fuel for Trucks		
11/01/2018	5886		Fuel for trucks - CM	Commercial Marina	-64.28
			Fuel for trucks - Admin	Administration	-43.59
			Fuel for trucks - SB	South Beach:SB Operations	-207.63
			Fuel for trucks (Maint) - SB Admin	South Beach:SB Admin & Overhead	-10.78
			Fuel for trucks (Maint) - SB Ops	South Beach:SB Operations	-21.55
			Fuel for trucks (Maint) - CM	Commercial Marina	-43.10
			Fuel for trucks (Maint) - NIT	International Terminal	-21.55
			Fuel for trucks (Maint) - LP	Leased Properties	-10.78
					<u>-423.26</u>
11/15/2018	40589	MacPherson Gintner & Diaz	Professional Services		
10/31/2018	80195		Professional Services	Administration	-787.50
					<u>-787.50</u>
11/15/2018	40590	Michael Burley	Moorage refund - cancellation of annual moorage due to mechanical issues		
10/26/2018	7385003		Moorage refund - cancellation of annual moorage due to mechanical issues	South Beach:SB Marina	-2,385.00
					<u>-2,385.00</u>
11/15/2018	40591	National Business Solutions	IT contract charge - 11/18		
	2% Early Pay Discount	National Business Solutions	IT contract charge - 11/18	Administration	7.48
11/05/2018	IN51901		IT contract charge - 11/18	Administration	-373.96
					<u>-366.48</u>
11/15/2018	40592	Neofunds	Postage		
10/28/2018	7900044060368887 Oct		Postage	Administration	-400.00
					<u>-400.00</u>



Operating Fund
October 18, 2018 through November 15, 2018

Date	Num	Name	Memo	Class	Amount
11/15/2018	40593	Newport Rental Service	Tilt trailer and track hoe rental to sink silt fence		
10/08/2018	93823		Tilt trailer and track hoe rental to sink silt fence	International Terminal	<u>-279.00</u>
					-279.00
11/15/2018	40594	Newport News-Times			
10/17/2018	332211		Help Wanted Ad	Administration	-140.13
10/17/2018	332246		Help Wanted Ad	Administration	-50.00
10/19/2018	332276		Help Wanted Ad	Administration	-140.13
10/19/2018	332277		Help Wanted Ad	Administration	-146.80
10/24/2018	332411		Salute to Fishermen Ad	Administration	-99.00
10/31/2018	332703		Chamber Visitors Guide Map Ad	Administration	<u>-399.00</u>
					-975.06
11/15/2018	40595	North Coast Electric Company	30 - 30 amp breakers		
11/01/2018	S8957872.001		30 - 30 amp breakers	Commercial Marina	-121.80
			Freight	Commercial Marina	<u>-16.82</u>
					-138.62
11/15/2018	40596	OBEC Consulting Engineers	PD5 pier approach project engineering - final design - 7/25/18-8/31/18		
09/22/2018	35228		PD5 pier approach project engineering - final design - 7/25/18-8/31/18	Commercial Marina	<u>-6,974.00</u>
					-6,974.00
11/15/2018	40597	Papé Material Handling Exchange			
10/16/2018	8083294		Window frame for HD90 forklift	International Terminal	-122.15
			Freight	International Terminal	-13.66
10/17/2018	4684521		Semi-annual forklift maintenance HD90	International Terminal	<u>-309.94</u>
					-445.75
11/15/2018	40598	Pioneer Connect			
11/01/2018	2301926		SB shop phone - acct #BUS-115083	South Beach:SB Operations	-40.83
11/01/2018	2301886		SB office phone - acct #BUS-113823	South Beach:SB Admin & Overhead	<u>-225.27</u>
					-266.10
11/15/2018	40599	Pioneer Printing Inc	Case of Rite-in-the-Rain copy paper		
11/08/2018	66813		Case of Rite-in-the-Rain copy paper - Admin 2/3	Administration	-431.25
			Case of Rite-in-the-Rain copy paper - SB Admin 1/3	South Beach:SB Admin & Overhead	<u>-143.75</u>
					-575.00



**Operating Fund
October 18, 2018 through November 15, 2018**

Date	Num	Name	Memo	Class	Amount
11/15/2018	40600	Platt Electric Supply			
10/12/2018	T550277		Ballasts for light project	South Beach:SB Operations	-120.88
10/17/2018	T581786		240 plug to plug welder into welder (Maint) - SB Admin	South Beach:SB Admin & Overhead	-5.46
			240 plug to plug welder into welder (Maint) - SB Ops	South Beach:SB Operations	-10.91
			240 plug to plug welder into welder (Maint) - CM	Commercial Marina	-21.81
			240 plug to plug welder into welder (Maint) - NIT	International Terminal	-10.91
			240 plug to plug welder into welder (Maint) - LP	Leased Properties	-5.46
10/25/2018	T662749		T8 bulbs	Commercial Marina	-89.28
					<u>-264.71</u>
11/15/2018	40601	Sherwin-Williams			
10/04/2018	0902-2		Exterior white paint and brush	International Terminal	-64.23
10/15/2018	4607-9		Paint cloth, brush, tray liners	Commercial Marina	-38.57
					<u>-102.80</u>
11/15/2018	40602	Smart Foodservice - Cash & Carry	Restroom and cleaning supplies		
10/30/2018	5410540029592		Restroom and cleaning supplies	South Beach:SB Operations	-133.64
					<u>-133.64</u>
11/15/2018	40603	Special Districts Association of Oregon	Regional Risk Management training - R Bishop, C Urbach, D Moon, K Gibson		
11/13/2018	18RM-102018-1129		Regional Risk Management training - R Bishop, C Urbach, D Moon, K Gibson	Administration	-200.00
					<u>-200.00</u>
11/15/2018	40604	Special Districts Insurance Services	Monthly health-dental-life insurance		
11/01/2018	Dec Health-Dental-Lf		Monthly health-dental-life insurance	Administration	-3,553.58
			Monthly health-dental-life insurance	Commercial Marina	-2,675.45
			Monthly health-dental-life insurance	South Beach:SB Admin & Overhead	-1,538.96
			Monthly health-dental-life insurance	South Beach:SB Operations	-3,690.26
			Monthly health-dental-life insurance	International Terminal	-956.74
					<u>-12,414.99</u>
11/15/2018	40605	State Forester	Fire Protection Fee		
10/29/2018	19189		Fire Protection Fee	Administration	-15.24
					<u>-15.24</u>
11/15/2018	40606	Suburban Propane			
10/31/2018	1568-103903 10-18		Propane - Acct #1568-103903	Commercial Marina	-84.41
10/31/2018	1568-103888SB 10-18		Propane - Acct #1568-103888	South Beach:SB Operations	-80.00
					<u>-164.41</u>



Operating Fund
October 18, 2018 through November 15, 2018

Date	Num	Name	Memo	Class	Amount
11/15/2018	40607	T & L Septic Tank Service	Pump out FWT holding tank		
11/02/2018	166817		Pump out FWT holding tank	International Terminal	-450.00
					<u>-450.00</u>
11/15/2018	40608	Thompson's Sanitary Service Inc			
10/31/2018	12058 10-2018		Trash Disposal - Int'l Terminal	International Terminal	-1,416.15
10/31/2018	13499 10-2018		Trash Disposal - PD7	Commercial Marina	-801.26
10/31/2018	12514 10-2018		Trash Disposal - SB	South Beach:SB Operations	-4,050.88
					<u>-6,268.29</u>
11/15/2018	40609	Toyota Industries Commercial Finance Inc			
11/06/2018	4002277984-17		2017 CM Forklift - Principal	Commercial Marina	-549.95
			2017 CM Forklift - Interest	Commercial Marina	-109.60
11/06/2018	4002277984-13		2013 CM Forklift - Principal	Commercial Marina	-575.51
			2013 CM Forklift - Interest	Commercial Marina	-4.14
					<u>-1,239.20</u>
11/15/2018	40610	True Cut Engraving	Name tags		
11/06/2018	724		Name tags	Administration	-90.00
					<u>-90.00</u>
11/15/2018	40611	Voya (State of Oregon Plan)	Monthly Employee Contributions		
11/01/2018	Oct - 2018		Durkee, James (8024)	Administration	-50.00
					<u>-50.00</u>
11/15/2018	40612	Xerox Corporation			
11/01/2018	095052508		Copier Lease and Print Charges - Port Office	Administration	-230.65
11/01/2018	095052509		Copier Lease and Print Charges - SB	South Beach:SB Admin & Overhead	-220.23
					<u>-450.88</u>
11/15/2018	40613	Yaquina Bay Communications	Banner Ad - Monthly Pkg		
11/01/2018	176672		Banner Ad - Monthly Pkg	Administration	-150.00
					<u>-150.00</u>
				Total	<u>-139,081.35</u>



**NOAA Fund
October 18, 2018 through November 15, 2018**

Date	Num	Name	Memo	Amount
11/01/2018	13433	Bureau of Labor and Industries	Dredging Public Works Fee	
10/31/2018	Public Works Fee		Dredging Public Works Fee	-439.35
				<u>-439.35</u>
11/01/2018	13434	Kroger - Fred Meyer Customer Charges	70661	
08/30/2018	12256		Sprinklers and hoses for bird deterrent	-140.92
09/24/2018	12344		Sprinklers and hoses for bird deterrent	-119.94
				<u>-260.86</u>
11/01/2018	13435	OR Dept of Consumer & Business Svcs	Boiler Permits (#103996 & 103997) 01/01/19-12/31/2020	
10/01/2018	730003026929-19-20		Boiler Permits (#103996 & 103997) 01/01/19-12/31/2020	-235.20
				<u>-235.20</u>
11/01/2018	13436	OR Dept of State Lands	APP0045552	
10/30/2018	20116		APP0059416 2018 Base Fee Fill Renewal Fee	-774.00
				<u>-774.00</u>
11/01/2018	13437	TCB Security Services Inc	Elevator Phone Monitoring NOAA	
10/29/2018	226093		Elevator Phone Monitoring NOAA	-20.00
				<u>-20.00</u>
11/01/2018	13438	Verizon Wireless	Phone Charges and Mifi	
10/12/2018	9816383499		Phone Charges and Mifi	-26.40
				<u>-26.40</u>
11/15/2018	13439	Chase-Visa	1302 contoller board for emergency generator	
10/23/2018	Ebay-Paypal		1302 contoller board for emergency generator	-1,870.00
			Shipping	-39.62
				<u>-1,909.62</u>
11/15/2018	13440	Lincoln County Public Works	Gas for truck	
11/01/2018	5886		Gas for truck	-30.19
				<u>-30.19</u>



**NOAA Fund
October 18, 2018 through November 15, 2018**

Date	Num	Name	Memo	Amount
11/15/2018	13441	Newport Rental Service	4257	
08/31/2018	92338-2		Scissor lift rental for overhead door and HVAC annual service	-66.00
				<u>-66.00</u>
11/15/2018	13442	Pioneer Connect	bus-159375	
11/01/2018	2302358		Telephone - acct #BUS-159375	-239.26
				<u>-239.26</u>
11/15/2018	13443	Power Motors	Oil change - 2008 Ford Ranger	
10/10/2018	FOCS219396		Oil change - 2008 Ford Ranger	-34.99
				<u>-34.99</u>
11/15/2018	13444	Special Districts Insurance Services	Monthly health-dental-life insurance	
11/01/2018	Dec Health-Dental-Lf		Monthly health-dental-life insurance	-683.38
				<u>-683.38</u>
11/15/2018	13445	Thompsons Sanitary Service	Oct service	
10/31/2018	22644 10-2018		Oct service	-447.70
				<u>-447.70</u>
			Total	<u>-5,166.95</u>

STAFF REPORT

NEWPORT OF NEWPORT WEBSITE

DATE: 11/13/2018
TO: Teri Dresler, Interim General Manager
ISSUED BY: Karen Hewitt, Administrative Supervisor

OVERVIEW

Summary:

The Port's current website went live in June of 2009. The website format and content are not up-to-date. As a "storefront" for the Port, having an updated website can help with user access as well as Port image.

Detail:

We currently have limited capacity internally to make updates to the site, and many changes have to be made by the site developer, at an hourly rate. While I have requested and gained access to change more of the content than was previously available, it remains that most of the site is not updatable in-house. The site is not mobile friendly, which means if someone were to view the site on a tablet or phone, they would just see a smaller version rather than a version adapted to that viewing platform. This is important for the RV park reservation system. The organization of the site is not necessarily easy to negotiate, and there have been inconsistencies from page to page.

Digital Deployment Inc. has developed a website platform specifically designed for Special Districts - Streamline. It includes a selection of templates for formatting the home page, is mobile friendly, and has a very flexible tool for establishing the underlying site menu. It also has a built-in dashboard for posting meetings, agendas and minutes. The site is very user friendly and Streamline offers unlimited support, and updated features are automatically made available, which are included in the monthly fee.

SDAO has partnered with Streamline to offer their platform to members at a reduced rate. The fee is based on operating revenue. For the Port of Newport, the cost would be \$300 per month, which includes hosting and the option for Google analytics.

I have had an opportunity to work on a "sandbox" site. I have created an overall site structure and have populated pages both with new information and information imported from our current website. There is additional information from our website that would be valuable to use, and Streamline can help with the migration. I'd like to provide you with a preview for your comments and input. This site is not yet ready to go live, but it is at a point where feedback is important before moving forward. We will need additional photos and text. Barb Dudley of the Port Volunteer Mates will be taking some additional photos. We are looking for a part time temporary writer to create the text for the new pages that need to be written or updated.

I will present a preview.



FINANCE DEPARTMENT MONTHLY REPORT

DATE: November 27, 2018
PERIOD: October 2018
TO: Teri Dresler, Interim General Manager
ISSUED BY: Mark Harris, Accounting Supervisor

OVERVIEW

Financial reports as of October 31, 2018 have been included. The budget figures on the profit and loss reports have been updated per the FY 2018-19 supplemental budget adopted on September 25, 2018.

The Accounts Paid Report (updated version) is also included.

Accounting staff are working with the banks we do business with to update all of the Port's signature cards. Commissioners may receive emails requesting specific information to complete this process.

###



DIRECTOR OF OPERATIONS REPORT

DATE: 11/16/2018
PERIOD: September 2018 – October 2018
TO: Teri Dressler, Interim GM
ISSUED BY: Aaron Bretz

OVERVIEW DIROPS

Summary:

On the commercial side, crab boats are getting ready for crab season and at the International Terminal, trawlers are servicing and changing gear. The RV park has slowed and the recreational marina has begun to shift into its winter pace. Bergerson Construction plans to start preparing the NOAA dredge disposal site at the end of November, and they plan to take up dredging operations after Christmas. The City of Newport has been pulling fill material off the disposal site, and we have had a definite increase in private individuals requesting sand in the last month. Rondy's has run into some clean fill that is not buildable and it appears that they will want that material removed from their property. Most of the work I've done this month revolves around planning work and pursuing funding on the Port Dock 5 Pier Replacement, along with working out sand issues and coordinating with our dredging contractor. Fishermen's Appreciation Day went well in the Commercial Marina.

Detail:

- **Port Dock 5 Pier**

I hope to have a complete set of final plans prior to the Port Commission meeting, and all the permits are in place excluding the city building permit. We have had some challenges in the electrical plans that revolve around the capacity of the current breaker cabinet for the dock complex and the capacity of the transformer at the street. It appears that we may lose 8 30 amp breakers on the docks when we cut over to the new cabinet. The current system is over-capacity, and the transformer at the street would need to be upgraded to add sufficient electrical capacity. We are still well within the scope of the engineering contract and the commission-approved budget for that contract. As a reminder, this contract was approved at a cost (\$139,500) that was higher than the annual budget line-item (\$86,625) due to tasks that were not completed in FY 2017-18.

Timeline for PD5 Engineering:

14DEC: Pending approval by the Port, submit to building dept.

I have been working hard on preparing grant documents for an EDA Grant request, which would cover 50% of the construction funding if approved. This requires us to view the project more in terms of its economic development potential rather than a simple infrastructure replacement project. It is a good fit for the grant, and we do have support from the Lincoln County EDA and the Cascades West Economic Development District. More political work will be necessary. I plan to have grant documents ready to go prior to December 1st.

- **Rogue Seawall Evaluation**

BergerABAM is finishing up their analysis, and has given us some idea of their incomplete findings. It appears that the soldier pilings holding the wall in place have degraded to a point that is within the safety margin as determined by initial engineering plans. This means that they have reached and surpassed the end of their service life. BergerABAM is currently considering repair options for the pilings and wall that would extend their life for several decades and would be most cost-effective. They will also be providing us with an expected timeline until failure of the soldier pilings and the wall itself along with rough cost estimates for any repairs they suggest. We expect to have that report prior to mid-January.

- **NOAA Maintenance Dredging**

Bergerson Construction intends to start site-prep at the dredge disposal site at the end of November. They plan to be able to start up dredging operations after Christmas. Our permit is in the final phase of approval.

- **Rondys Lease**

We removed the stack of old wooden pilings from the Rondys property, and Rondys worked with the owner of the rail cars to determine final disposition. Rondys has discovered a quantity of un-buildable, clean fill within the piles of sand on their property (photos attached). This material was placed by the Port, and if Rondys determines that they do not want that material the Port will be responsible for removal under the terms of the Port's lease. The quantity is yet unknown although it will likely be along the order of 4-5,000 cubic yards. I do not recommend storing this material on the Port's 9 acre lot; it's my intent to try and create a plan to dispose of the material at the airport in a way that maximizes the efficient transportation of material and leverages the Port's supply of clean buildable material to reduce the out-of-pocket cost of transportation.

- **South Beach Marina Docks**

I accompanied a contractor for our insurance company as he completed a routine 5-year assessment of Port assets. During our assessment, I noticed that the docks in the South Beach Marina were not listed on the insurance schedule. I determined that we do not have property insurance on the docks in South Beach. I am getting a quote on what the additional premiums would cost to insure the South Beach docks to the same threshold as the Port's other floating docks and piers. I am yet unsure if this was a mistake or a conscious choice that was made in the past, but I am trying to gather more information to help decide the best way ahead.

- **Yaquina Bay Brownfields Initiative**

I am part of the community advisory committee for the Yaquina Bay Brownfields Initiative. I've attended one meeting, and we will be developing the criteria to prioritize Brownfields projects in the county. There are \$600,000 available for Brownfields projects in the county over the next two years.

- **Maintenance Crew**

The crew finished fabrication of a new aluminum fish bucket that is used to offload various fish at the hoist (photos attached). This aluminum bucket will cost less in the long run because of an improved design and the fact that it won't need to be re-galvanized periodically.

Hauled away wooden pilings at McLean Point.

Repaired camels at NOAA; designed repairs that will be permanent for the camel system. This project is on the Capital Improvement List.

Installed Silt Fence at McLean Point.

Commercial Marina- Kent Gibson, Harbormaster

Billable Services Performed this Period (August)

Billable Services Performed this Period (October)

- Forklift – Hrs 47 Moorage – 100 Days
- 30 Ton Hydraulic Crane – Hrs 53.5 Hoist Dock Tie Up – Hrs 28
- Labor – Hrs 78.5 120V power – 0
- Other (Net Work) – 13Days 208V power – 97 Days

Special Projects: *(Not regular maintenance & repair tasks. Enter project name and notes)*

- Completed In Progress **Build new Hoist Bucket / Materials Purchased.**
- Completed In Progress **Silt fence around dirt pile on 9 acre lot**

- Completed In Progress **Removal of box cars on Hall property**

- Completed In Progress

- Completed in Progress

Billable Services Performed this Period:

- Forklift – 67.25Hrs Hoist Dock Crane(s) – 14.5Hrs

- 30 Ton Hydraulic Crane - *Enter #.Hrs* Dock Tie Up – 153Hrs

- Launch Tickets - *Enter #. passes sold* Other (Labor) – Hrs

Special Projects: *(Not regular maintenance & repair tasks. Enter project name and notes)*

- Completed In Progress *Maintenance crew installed new railing on the West end of the hoist dock.*
- Completed In Progress *Click here to enter text.*
- Completed In Progress *Click here to enter text.*
- Completed In Progress *Click here to enter text.*

Completed In Progress

[Click here to enter text.](#)

Completed In Progress

Other: *(Enter issues, events, large purchases and other notable items)*

Bryan Farmer retired ON Oct 25th after 5 years of service to the Port. We will definitely miss his electrical trouble shooting abilities.

Forklift usage was down about 18% from last month but up 24% over last year.

Tie up time was slightly higher than last month up 4% but 40% higher over last year.

Crane usage was considerably higher (380%)than last month but only 16% higher than last October. Although the 380% seems a lot higher, usage was only 14.5 hours.

Several Semi loads of new crab pots have arrived in the last 2 weeks. Fishermen are busy rigging up their pots for the upcoming season set to open on Dec 1st.

NOAA MOC-P – Jim Durkee. Facility Manager

Not available this month due to illness

Volunteer Work Crews- The Mates

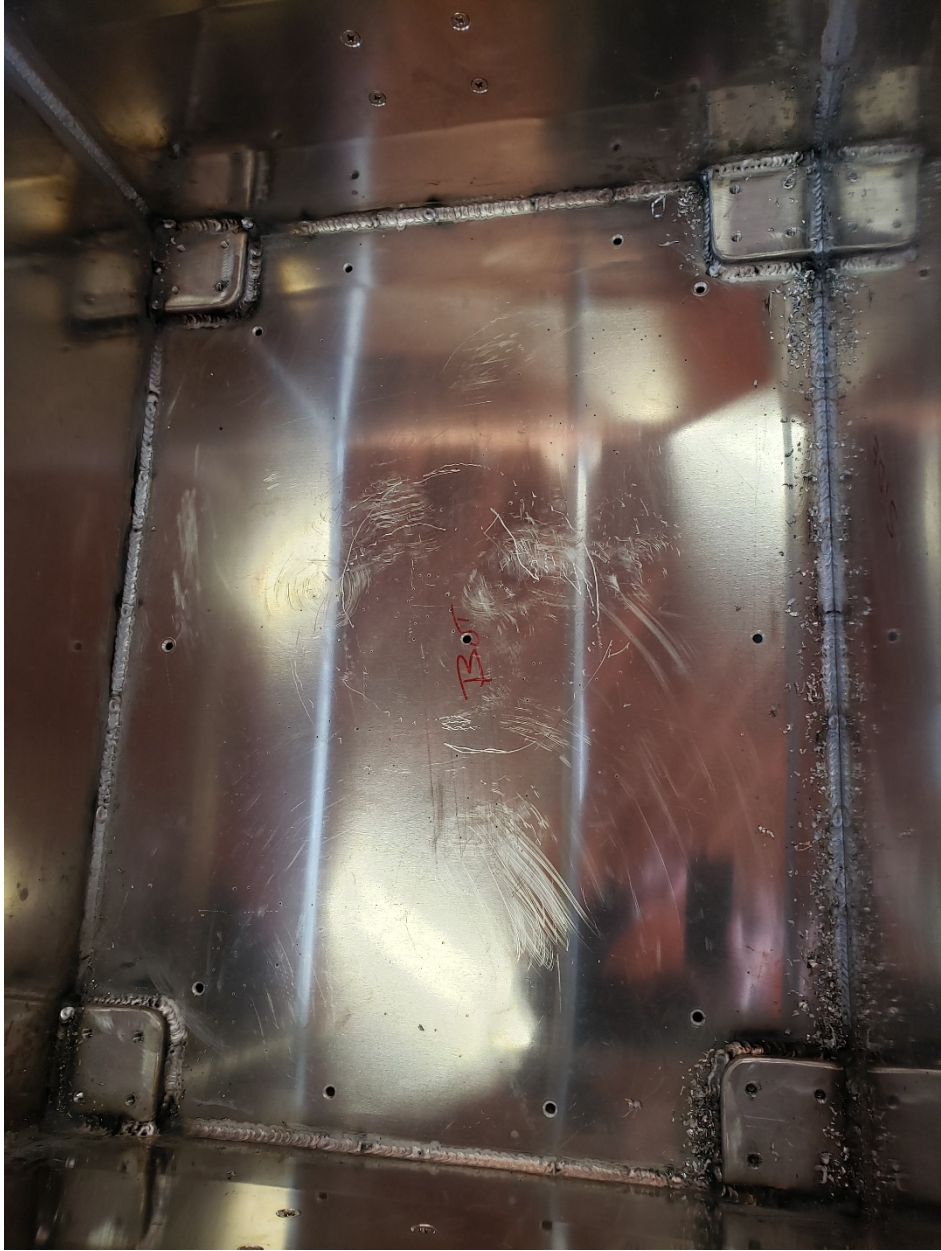
- Began Taking Photos for the New Website









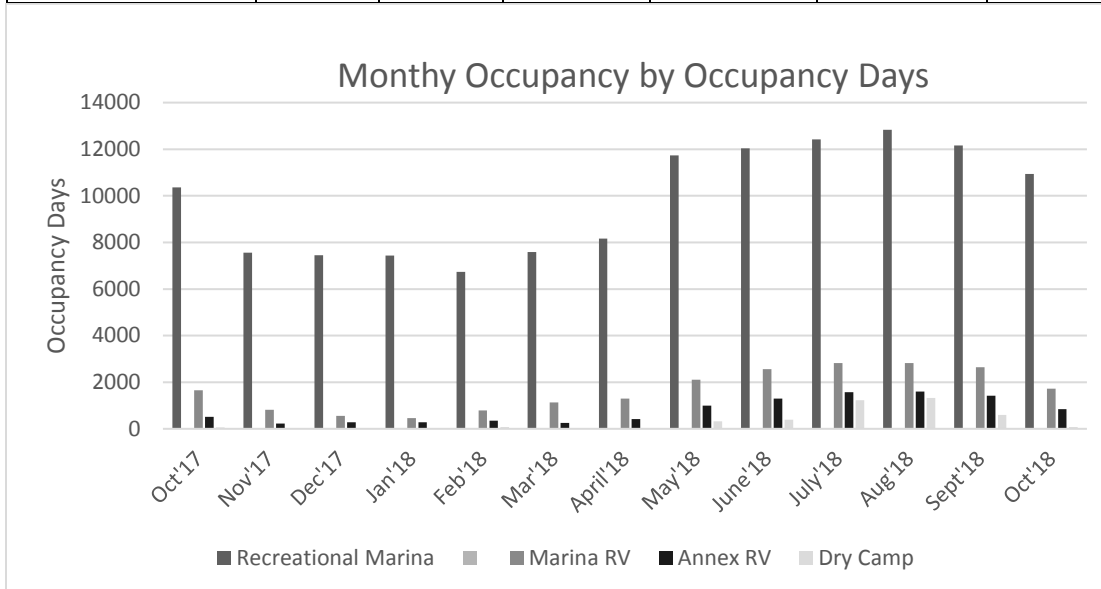


RV PARK & RECREATIONAL MARINA OCCUPANCY REPORT

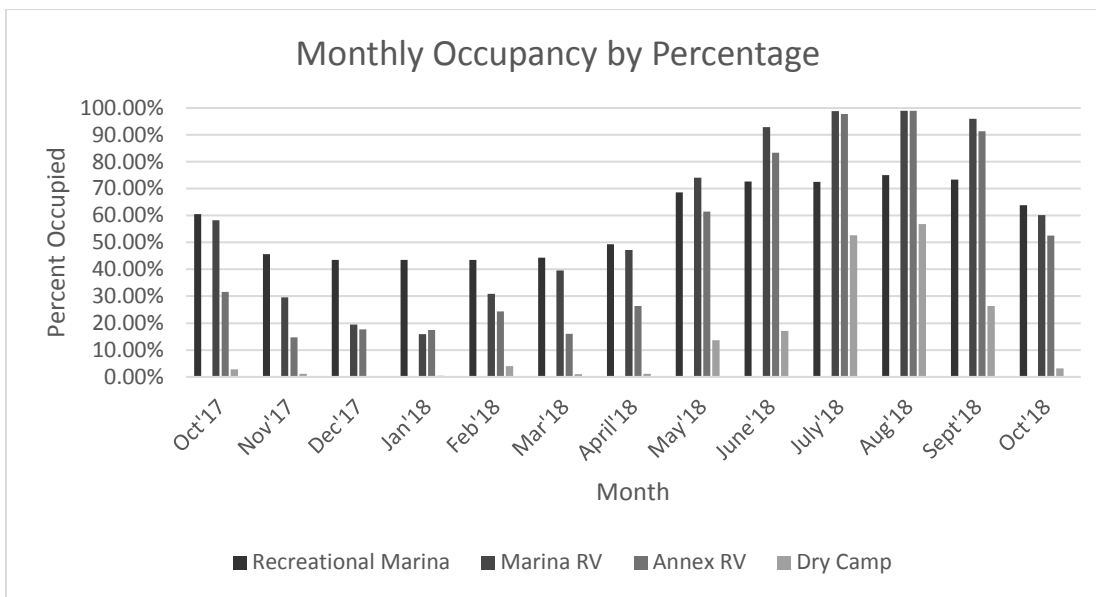
DATE: *6 November 2018*
RE: *Month Ending 31 October 2018*
TO: *Aaron Bretz, Director of Operations*
ISSUED BY: *Bill Hewitt, RV Park Supervisor*

The South Beach operation had a good October 2018 when compared to October 2017. We had a lot of nice sunny days this October and that helped push it ahead of last years' rainy October. All four park categories were ahead of last year for the month. The South Beach year to date numbers were also ahead of this time last year in all four categories. We were busy booking monthly reservations in October for next year and busy now in November booking daily and weekly reservations for 2019. We are almost sold out already in the Marina RV park for the 4th of July holiday which is being surcharged 20 dollars per night extra for the first, second, third and fourth. As we begin to slow down we will be busy updating our boat and RV files, getting organized, plus cleaning, painting etc.

OCCUPANCY DAYS MONTH & YTD						
Oct'18	2017	2018	Change	YTD2017	YTD2018	Change
Recreational Marina	10365	10933	5.47%	98405	102113	3.77%
Marina RV	1661	1717	3.37%	17271	18360	6.31%
Annex RV	509	847	66.40%	8212	9042	10.11%
Dry Camp	66	74	12.12%	3411	4056	18.91%



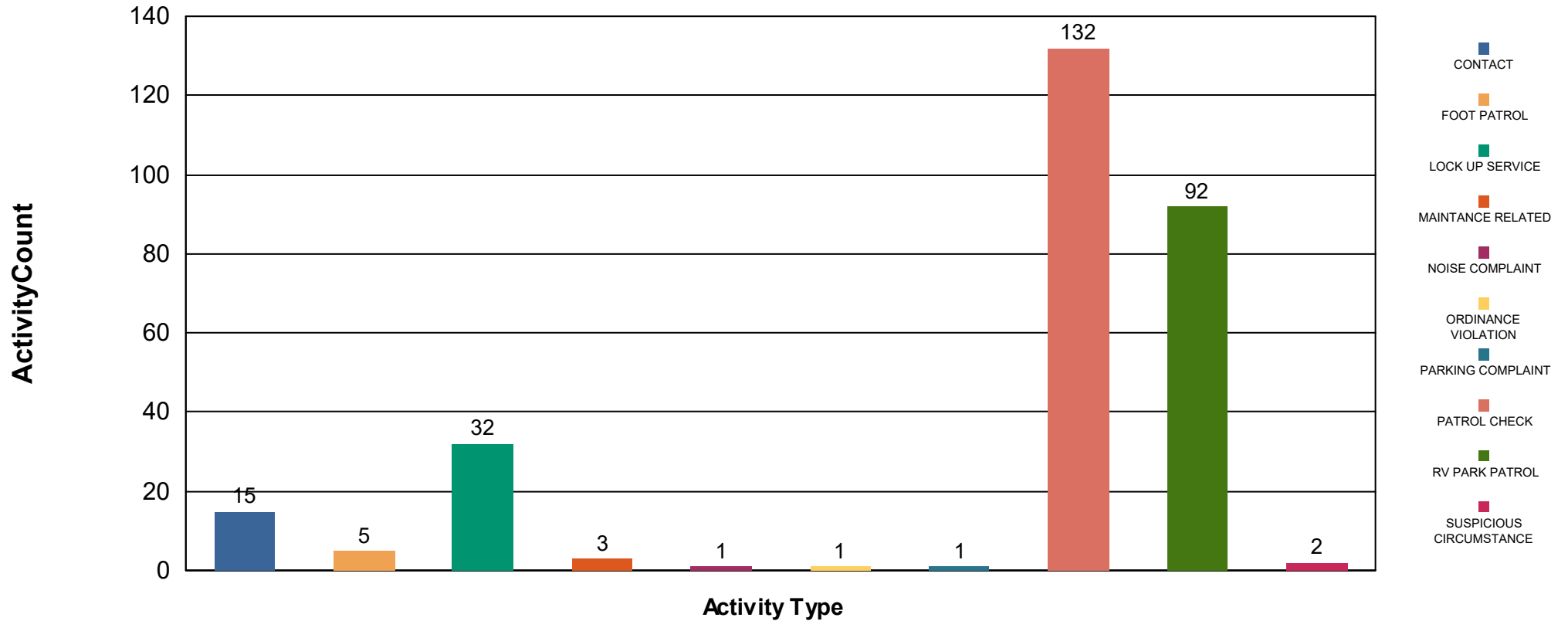
OCCUPANCY PERCENT MONTH & YTD						
Oct'18	2017	2018	Change	YTD2017	YTD2018	Change
Recreational Marina	60.57%	63.91%	3.34%	58.64%	60.85%	2.21%
Marina RV	58.23%	60.20%	1.97%	61.57%	65.64%	4.07%
Annex RV	31.57%	52.54%	20.97%	51.94%	57.19%	5.25%
Dry Camp	2.84%	3.18%	0.34%	14.57%	17.79%	3.22%

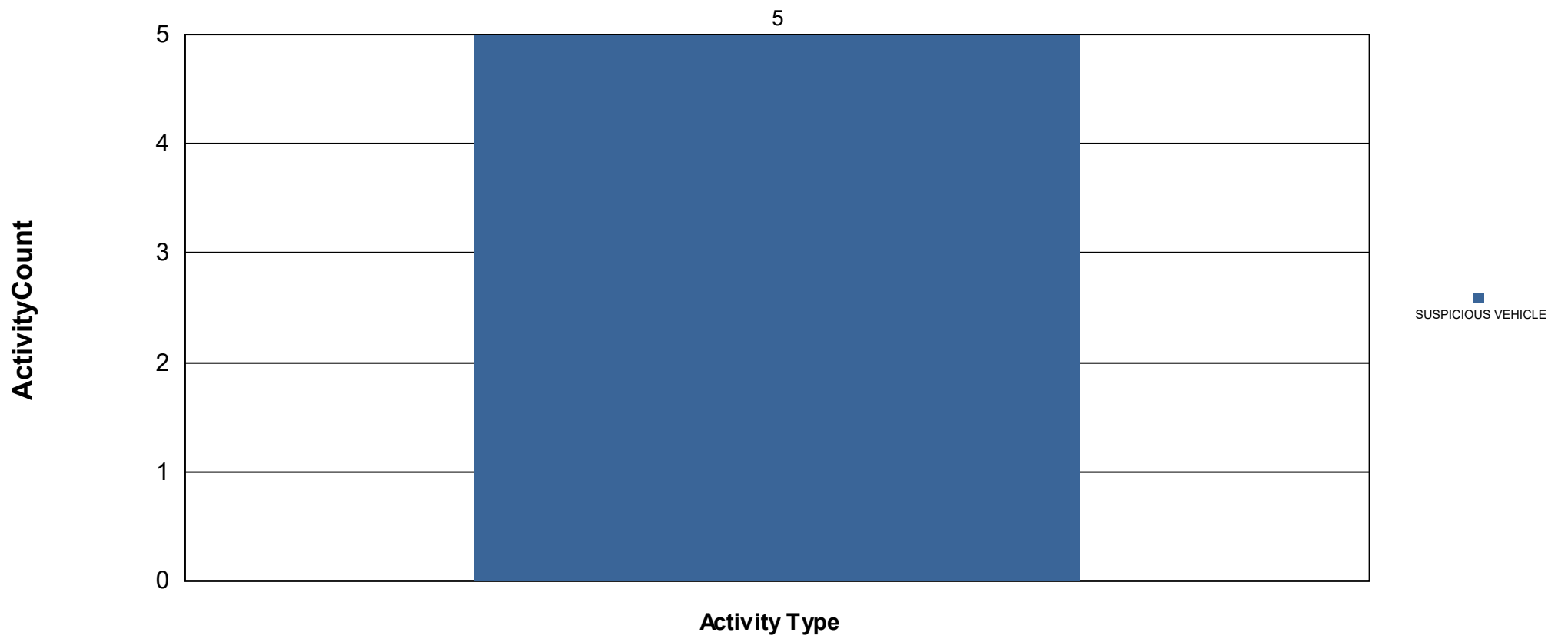


Activity Count

Patrol Services

Report Range : 10/1/2018 12:00:00AM To 10/31/2018 11:59:59PM Report Title : PORT DAILY EVENTS REPORT





PORT OF NEWPORT OREGON

CONTACT				
<u>Event Start</u>	<u>Event End</u>	<u>Man Hours</u>	<u>Location</u>	<u>Officer</u>
10/04/2018 1823	10/04/2018 1824	0 Hr 1 Min	TCB PATROL SERVICES : GOV : PORT OF NEWPORT OREGON : SOUTH SIDE : RV PARKS	SILVIA, JAMES
10/06/2018 2215	10/06/2018 2221	0 Hr 6 Min	TCB PATROL SERVICES : GOV : PORT OF NEWPORT OREGON : SOUTH SIDE : RV PARKS	JACOB FREDENBURG
10/11/2018 1832	10/11/2018 1836	0 Hr 4 Min	TCB PATROL SERVICES : GOV : PORT OF NEWPORT OREGON : SOUTH SIDE : RV PARKS	SILVIA, JAMES
10/11/2018 1845	10/11/2018 1847	0 Hr 2 Min	TCB PATROL SERVICES : GOV : PORT OF NEWPORT OREGON : SOUTH SIDE : RV PARKS	SILVIA, JAMES
10/11/2018 2109	10/11/2018 2112	0 Hr 3 Min	TCB PATROL SERVICES : GOV : PORT OF NEWPORT OREGON : SOUTH SIDE : RV PARKS	SILVIA, JAMES
10/12/2018 0022	10/12/2018 0027	0 Hr 5 Min	TCB PATROL SERVICES : GOV : PORT OF NEWPORT OREGON : SOUTH SIDE	SILVIA, JAMES
10/12/2018 0250	10/12/2018 0257	0 Hr 7 Min	TCB PATROL SERVICES : GOV : PORT OF NEWPORT OREGON : SOUTH SIDE : RV PARKS	SILVIA, JAMES
10/12/2018 2122	10/12/2018 2128	0 Hr 6 Min	TCB PATROL SERVICES : GOV : PORT OF NEWPORT OREGON : SOUTH SIDE	JACOB FREDENBURG
10/14/2018 1833	10/14/2018 1836	0 Hr 3 Min	TCB PATROL SERVICES : GOV : PORT OF NEWPORT OREGON : SOUTH SIDE : RV PARKS	KILGORE, ROBERT
10/18/2018 0148	10/18/2018 0155	0 Hr 7 Min	TCB PATROL SERVICES : GOV : PORT OF NEWPORT OREGON : SOUTH SIDE : BOAT LAUNCH : MARINA STORE	SILVIA, JAMES
10/25/2018 0220	10/25/2018 0222	0 Hr 2 Min	TCB PATROL SERVICES : GOV : PORT OF NEWPORT OREGON : SOUTH SIDE	SILVIA, JAMES
10/26/2018 2048	10/26/2018 2051	0 Hr 3 Min	TCB PATROL SERVICES : GOV : PORT OF NEWPORT OREGON : SOUTH SIDE : RV PARKS : DRY CAMPING AREA	SILVIA, JAMES
10/27/2018 0218	10/27/2018 0225	0 Hr 7 Min	TCB PATROL SERVICES : GOV : PORT OF NEWPORT OREGON : SOUTH SIDE : RV PARKS	SILVIA, JAMES
10/30/2018 2210	10/30/2018 2216	0 Hr 6 Min	TCB PATROL SERVICES : GOV : PORT OF NEWPORT OREGON : SOUTH SIDE	VALENTINE, DONALD

PORT OF NEWPORT OREGON

Total Man Hours Primary Officer : 1 Hr 2 Min
Total Man Hours Backup Officer : 0 Hr 0 Min
Total Man Hours : 1 Hr 2 Min

Total Events : 14
Activity Type Percentage : 5%

CONTACT

FOOT PATROL				
<u>Event Start</u>	<u>Event End</u>	<u>Man Hours</u>	<u>Location</u>	<u>Officer</u>

10/07/2018 0305	10/07/2018 0313	0 Hr 8 Min	TCB PATROL SERVICES : GOV : PORT OF NEWPORT OREGON : SOUTH SIDE	JACOB FREDENBURG
10/12/2018 2133	10/12/2018 2154	0 Hr 21 Min	TCB PATROL SERVICES : GOV : PORT OF NEWPORT OREGON : SOUTH SIDE : RECREATIONAL DOCKS	JACOB FREDENBURG
10/20/2018 2114	10/20/2018 2134	0 Hr 20 Min	TCB PATROL SERVICES : GOV : PORT OF NEWPORT OREGON : SOUTH SIDE	JACOB FREDENBURG
10/20/2018 2114	10/20/2018 2134	0 Hr 20 Min	SOUTH SIDE	BVANDYKE
10/26/2018 1830	10/26/2018 1848	0 Hr 18 Min	TCB PATROL SERVICES : GOV : PORT OF NEWPORT OREGON : SOUTH SIDE : RECREATIONAL DOCKS	SILVIA, JAMES

PORT OF NEWPORT OREGON

Total Man Hours Primary Officer : 1 Hr 7 Min
Total Man Hours Backup Officer : 0 Hr 20 Min
Total Man Hours : 1 Hr 27 Min

Total Events : 5
Activity Type Percentage : 2%

FOOT PATROL

LOCK UP SERVICE				
Event Start	Event End	Man Hours	Location	Officer
10/01/2018 2329	10/01/2018 2332	0 Hr 3 Min	TCB PATROL SERVICES : GOV : PORT OF NEWPORT OREGON : SOUTH SIDE	KILGORE, ROBERT
10/02/2018 2225	10/02/2018 2225	0 Hr 0 Min	TCB PATROL SERVICES : GOV : PORT OF NEWPORT OREGON : SOUTH SIDE	KILGORE, ROBERT
10/03/2018 2156	10/03/2018 2156	0 Hr 0 Min	TCB PATROL SERVICES : GOV : PORT OF NEWPORT OREGON : SOUTH SIDE	KILGORE, ROBERT
10/05/2018 0305	10/05/2018 0306	0 Hr 1 Min	TCB PATROL SERVICES : GOV : PORT OF NEWPORT OREGON : SOUTH SIDE	SILVIA, JAMES
10/05/2018 2204	10/05/2018 2205	0 Hr 1 Min	SOUTH SIDE	VALENTINE, DONALD
10/05/2018 2204	10/05/2018 2205	0 Hr 1 Min	TCB PATROL SERVICES : GOV : PORT OF NEWPORT OREGON : SOUTH SIDE	JACOB FREDENBURG
10/06/2018 2223	10/06/2018 2226	0 Hr 3 Min	TCB PATROL SERVICES : GOV : PORT OF NEWPORT OREGON : SOUTH SIDE	JACOB FREDENBURG
10/07/2018 2240	10/07/2018 2240	0 Hr 0 Min	TCB PATROL SERVICES : GOV : PORT OF NEWPORT OREGON : SOUTH SIDE	KILGORE, ROBERT
10/09/2018 0321	10/09/2018 0321	0 Hr 0 Min	TCB PATROL SERVICES : GOV : PORT OF NEWPORT OREGON : SOUTH SIDE	KILGORE, ROBERT
10/09/2018 2325	10/09/2018 2325	0 Hr 0 Min	TCB PATROL SERVICES : GOV : PORT OF NEWPORT OREGON : SOUTH SIDE	KILGORE, ROBERT
10/10/2018 2215	10/10/2018 2215	0 Hr 0 Min	TCB PATROL SERVICES : GOV : PORT OF NEWPORT OREGON : SOUTH SIDE	KILGORE, ROBERT
10/11/2018 2156	10/11/2018 2156	0 Hr 0 Min	TCB PATROL SERVICES : GOV : PORT OF NEWPORT OREGON : SOUTH SIDE	SILVIA, JAMES

10/12/2018 2220	10/12/2018 2222	0 Hr 2 Min	TCB PATROL SERVICES : GOV : PORT OF NEWPORT OREGON : SOUTH SIDE	JACOB FREDENBURG
10/13/2018 2158	10/13/2018 2205	0 Hr 7 Min	TCB PATROL SERVICES : GOV : PORT OF NEWPORT OREGON : SOUTH SIDE	JACOB FREDENBURG
10/13/2018 2158	10/13/2018 2205	0 Hr 7 Min	SOUTH SIDE	BVANDYKE
10/14/2018 2240	10/14/2018 2245	0 Hr 5 Min	TCB PATROL SERVICES : GOV : PORT OF NEWPORT OREGON : SOUTH SIDE	KILGORE, ROBERT
10/15/2018 2226	10/15/2018 2227	0 Hr 1 Min	TCB PATROL SERVICES : GOV : PORT OF NEWPORT OREGON : SOUTH SIDE	KILGORE, ROBERT
10/17/2018 0014	10/17/2018 0014	0 Hr 0 Min	TCB PATROL SERVICES : GOV : PORT OF NEWPORT OREGON : SOUTH SIDE	VALENTINE, DONALD
10/17/2018 2302	10/17/2018 2302	0 Hr 0 Min	TCB PATROL SERVICES : GOV : PORT OF NEWPORT OREGON : SOUTH SIDE	KILGORE, ROBERT
10/18/2018 2240	10/18/2018 2243	0 Hr 3 Min	TCB PATROL SERVICES : GOV : PORT OF NEWPORT OREGON : SOUTH SIDE	VALENTINE, DONALD
10/20/2018 0011	10/20/2018 0011	0 Hr 0 Min	TCB PATROL SERVICES : GOV : PORT OF NEWPORT OREGON : SOUTH SIDE	VALENTINE, DONALD
10/20/2018 2155	10/20/2018 2155	0 Hr 0 Min	TCB PATROL SERVICES : GOV : PORT OF NEWPORT OREGON : SOUTH SIDE	JACOB FREDENBURG
10/21/2018 2157	10/21/2018 2157	0 Hr 0 Min	TCB PATROL SERVICES : GOV : PORT OF NEWPORT OREGON : SOUTH SIDE	KILGORE, ROBERT
10/22/2018 2156	10/22/2018 2157	0 Hr 1 Min	TCB PATROL SERVICES : GOV : PORT OF NEWPORT OREGON : SOUTH SIDE	VALENTINE, DONALD
10/23/2018 2158	10/23/2018 2158	0 Hr 0 Min	TCB PATROL SERVICES : GOV : PORT OF NEWPORT OREGON : SOUTH SIDE	FISHER, LEANNE
10/24/2018 2117	10/24/2018 2118	0 Hr 1 Min	TCB PATROL SERVICES : GOV : PORT OF NEWPORT OREGON : SOUTH SIDE	FISHER, LEANNE
10/26/2018 0040	10/26/2018 0043	0 Hr 3 Min	TCB PATROL SERVICES : GOV : PORT OF NEWPORT OREGON : SOUTH SIDE	FISHER, LEANNE
10/27/2018 2319	10/27/2018 2319	0 Hr 0 Min	TCB PATROL SERVICES : GOV : PORT OF NEWPORT OREGON : SOUTH SIDE	SILVIA, JAMES
10/28/2018 2202	10/28/2018 2202	0 Hr 0 Min	TCB PATROL SERVICES : GOV : PORT OF NEWPORT OREGON : SOUTH SIDE	JACOB FREDENBURG
10/30/2018 0200	10/30/2018 0200	0 Hr 0 Min	TCB PATROL SERVICES : GOV : PORT OF NEWPORT OREGON : SOUTH SIDE	KILGORE, ROBERT
10/30/2018 2210	10/30/2018 2210	0 Hr 0 Min	TCB PATROL SERVICES : GOV : PORT OF NEWPORT OREGON : SOUTH SIDE	VALENTINE, DONALD
10/31/2018 2135	10/31/2018 2138	0 Hr 3 Min	TCB PATROL SERVICES : GOV : PORT OF NEWPORT OREGON : SOUTH SIDE	FISHER, LEANNE

PORT OF NEWPORT OREGON**Total Man Hours Primary Officer : 0 Hr 34 Min****Total Events : 32****Total Man Hours Backup Officer : 0 Hr 8 Min****Activity Type Percentage : 11%****LOCK UP SERVICE****Total Man Hours : 0 Hr 42 Min****MAINTANCE RELATED**

<u>Event Start</u>	<u>Event End</u>	<u>Man Hours</u>	<u>Location</u>	<u>Officer</u>
10/07/2018 0313	10/07/2018 0316	0 Hr 3 Min	TCB PATROL SERVICES : GOV : PORT OF NEWPORT OREGON : SOUTH SIDE	JACOB FREDENBURG
10/08/2018 1829	10/08/2018 1839	0 Hr 10 Min	TCB PATROL SERVICES : GOV : PORT OF NEWPORT OREGON : SOUTH SIDE : RV PARKS	JACOB FREDENBURG
10/26/2018 1845	10/26/2018 1848	0 Hr 3 Min	TCB PATROL SERVICES : GOV : PORT OF NEWPORT OREGON : SOUTH SIDE : RECREATIONAL DOCKS	SILVIA, JAMES

PORT OF NEWPORT OREGON**Total Man Hours Primary Officer : 0 Hr 16 Min****Total Events : 3****Total Man Hours Backup Officer : 0 Hr 0 Min****Activity Type Percentage : 1%****MAINTANCE RELATED****Total Man Hours : 0 Hr 16 Min****NOISE COMPLAINT**

<u>Event Start</u>	<u>Event End</u>	<u>Man Hours</u>	<u>Location</u>	<u>Officer</u>
10/12/2018 2208	10/12/2018 2212	0 Hr 4 Min	TCB PATROL SERVICES : GOV : PORT OF NEWPORT OREGON : SOUTH SIDE : RV PARKS	JACOB FREDENBURG

PORT OF NEWPORT OREGON**Total Man Hours Primary Officer : 0 Hr 4 Min****Total Events : 1****Total Man Hours Backup Officer : 0 Hr 0 Min****Activity Type Percentage : 0%****NOISE COMPLAINT****Total Man Hours : 0 Hr 4 Min****ORDINANCE VIOLATION**

<u>Event Start</u>	<u>Event End</u>	<u>Man Hours</u>	<u>Location</u>	<u>Officer</u>
10/12/2018 2148	10/12/2018 2153	0 Hr 5 Min	TCB PATROL SERVICES : GOV : PORT OF NEWPORT OREGON : SOUTH SIDE : RECREATIONAL DOCKS	JACOB FREDENBURG

PORT OF NEWPORT OREGON

Total Man Hours Primary Officer : 0 Hr 5 Min

Total Events : 1

Total Man Hours Backup Officer : 0 Hr 0 Min

Activity Type Percentage : 0%

ORDINANCE VIOLATION

Total Man Hours : 0 Hr 5 Min

PARKING COMPLAINT

<u>Event Start</u>	<u>Event End</u>	<u>Man Hours</u>	<u>Location</u>	<u>Officer</u>
10/01/2018 0406	10/01/2018 0416	0 Hr 10 Min	TCB PATROL SERVICES : GOV : PORT OF NEWPORT OREGON : SOUTH SIDE	KILGORE, ROBERT

PORT OF NEWPORT OREGON

Total Man Hours Primary Officer : 0 Hr 10 Min

Total Events : 1

Total Man Hours Backup Officer : 0 Hr 0 Min

Activity Type Percentage : 0%

PARKING COMPLAINT

Total Man Hours : 0 Hr 10 Min

PATROL CHECK

<u>Event Start</u>	<u>Event End</u>	<u>Man Hours</u>	<u>Location</u>	<u>Officer</u>
10/01/2018 0136	10/01/2018 0156	0 Hr 20 Min	TCB PATROL SERVICES : GOV : PORT OF NEWPORT OREGON : SOUTH SIDE	KILGORE, ROBERT
10/01/2018 0302	10/01/2018 0415	1 Hr 13 Min	TCB PATROL SERVICES : GOV : PORT OF NEWPORT OREGON : SOUTH SIDE	KILGORE, ROBERT
10/01/2018 0500	10/01/2018 0530	0 Hr 30 Min	TCB PATROL SERVICES : GOV : PORT OF NEWPORT OREGON : SOUTH SIDE	KILGORE, ROBERT
10/01/2018 1830	10/01/2018 1839	0 Hr 9 Min	TCB PATROL SERVICES : GOV : PORT OF NEWPORT OREGON : SOUTH SIDE	KILGORE, ROBERT
10/01/2018 2015	10/01/2018 2247	2 Hr 32 Min	TCB PATROL SERVICES : GOV : PORT OF NEWPORT OREGON : SOUTH SIDE	KILGORE, ROBERT
10/01/2018 2311	10/01/2018 2346	0 Hr 35 Min	TCB PATROL SERVICES : GOV : PORT OF NEWPORT OREGON : SOUTH SIDE	KILGORE, ROBERT
10/02/2018 0223	10/02/2018 0315	0 Hr 52 Min	TCB PATROL SERVICES : GOV : PORT OF NEWPORT OREGON : SOUTH SIDE	KILGORE, ROBERT
10/02/2018 2219	10/02/2018 2313	0 Hr 54 Min	TCB PATROL SERVICES : GOV : PORT OF NEWPORT OREGON : SOUTH SIDE	KILGORE, ROBERT
10/03/2018 0123	10/03/2018 0143	0 Hr 20 Min	TCB PATROL SERVICES : GOV : PORT OF NEWPORT OREGON : SOUTH SIDE	KILGORE, ROBERT
10/03/2018 1828	10/03/2018 1848	0 Hr 20 Min	TCB PATROL SERVICES : GOV : PORT OF NEWPORT OREGON : SOUTH SIDE	KILGORE, ROBERT

10/03/2018 2003	10/03/2018 2027	0 Hr 24 Min	TCB PATROL SERVICES : GOV : PORT OF NEWPORT OREGON : SOUTH SIDE	KILGORE, ROBERT
10/03/2018 2146	10/03/2018 2248	1 Hr 2 Min	TCB PATROL SERVICES : GOV : PORT OF NEWPORT OREGON : SOUTH SIDE	KILGORE, ROBERT
10/03/2018 2318	10/03/2018 2358	0 Hr 40 Min	TCB PATROL SERVICES : GOV : PORT OF NEWPORT OREGON : SOUTH SIDE	KILGORE, ROBERT
10/04/2018 0126	10/04/2018 0139	0 Hr 13 Min	TCB PATROL SERVICES : GOV : PORT OF NEWPORT OREGON : SOUTH SIDE	SILVIA, JAMES
10/04/2018 1815	10/04/2018 1830	0 Hr 15 Min	TCB PATROL SERVICES : GOV : PORT OF NEWPORT OREGON : SOUTH SIDE	SILVIA, JAMES
10/04/2018 2159	10/04/2018 2240	0 Hr 41 Min	TCB PATROL SERVICES : GOV : PORT OF NEWPORT OREGON : SOUTH SIDE	SILVIA, JAMES
10/05/2018 0258	10/05/2018 0422	1 Hr 24 Min	TCB PATROL SERVICES : GOV : PORT OF NEWPORT OREGON : SOUTH SIDE	SILVIA, JAMES
10/05/2018 1853	10/05/2018 2203	3 Hr 10 Min	TCB PATROL SERVICES : GOV : PORT OF NEWPORT OREGON : SOUTH SIDE	JACOB FREDENBURG
10/05/2018 1853	10/05/2018 2203	3 Hr 10 Min	SOUTH SIDE	VALENTINE, DONALD
10/05/2018 2227	10/05/2018 2315	0 Hr 48 Min	TCB PATROL SERVICES : GOV : PORT OF NEWPORT OREGON : SOUTH SIDE	JACOB FREDENBURG
10/05/2018 2227	10/05/2018 2315	0 Hr 48 Min	SOUTH SIDE	VALENTINE, DONALD
10/06/2018 0046	10/06/2018 0124	0 Hr 38 Min	TCB PATROL SERVICES : GOV : PORT OF NEWPORT OREGON : SOUTH SIDE	JACOB FREDENBURG
10/06/2018 0310	10/06/2018 0405	0 Hr 55 Min	TCB PATROL SERVICES : GOV : PORT OF NEWPORT OREGON : SOUTH SIDE	JACOB FREDENBURG
10/06/2018 0440	10/06/2018 0446	0 Hr 6 Min	TCB PATROL SERVICES : GOV : PORT OF NEWPORT OREGON : SOUTH SIDE	JACOB FREDENBURG
10/06/2018 1809	10/06/2018 1851	0 Hr 42 Min	TCB PATROL SERVICES : GOV : PORT OF NEWPORT OREGON : SOUTH SIDE	JACOB FREDENBURG
10/06/2018 2043	10/06/2018 2227	1 Hr 44 Min	TCB PATROL SERVICES : GOV : PORT OF NEWPORT OREGON : SOUTH SIDE	JACOB FREDENBURG
10/07/2018 0301	10/07/2018 0431	1 Hr 30 Min	TCB PATROL SERVICES : GOV : PORT OF NEWPORT OREGON : SOUTH SIDE	JACOB FREDENBURG
10/07/2018 1832	10/07/2018 1854	0 Hr 22 Min	TCB PATROL SERVICES : GOV : PORT OF NEWPORT OREGON : SOUTH SIDE	KILGORE, ROBERT
10/07/2018 2235	10/08/2018 0116	2 Hr 41 Min	TCB PATROL SERVICES : GOV : PORT OF NEWPORT OREGON : SOUTH SIDE	KILGORE, ROBERT
10/08/2018 0253	10/08/2018 0401	1 Hr 8 Min	TCB PATROL SERVICES : GOV : PORT OF NEWPORT OREGON : SOUTH SIDE	KILGORE, ROBERT
10/08/2018 0447	10/08/2018 0538	0 Hr 51 Min	TCB PATROL SERVICES : GOV : PORT OF NEWPORT OREGON : SOUTH SIDE	KILGORE, ROBERT
10/08/2018 1801	10/08/2018 1839	0 Hr 38 Min	TCB PATROL SERVICES : GOV : PORT OF NEWPORT OREGON : SOUTH SIDE	JACOB FREDENBURG

10/08/2018 2028	10/08/2018 2038	0 Hr 10 Min	TCB PATROL SERVICES : GOV : PORT OF NEWPORT OREGON : SOUTH SIDE	JACOB FREDENBURG
10/08/2018 2112	10/08/2018 2140	0 Hr 28 Min	TCB PATROL SERVICES : GOV : PORT OF NEWPORT OREGON : SOUTH SIDE	JACOB FREDENBURG
10/08/2018 2231	10/08/2018 2304	0 Hr 33 Min	TCB PATROL SERVICES : GOV : PORT OF NEWPORT OREGON : SOUTH SIDE	JACOB FREDENBURG
10/09/2018 0226	10/09/2018 0359	1 Hr 33 Min	TCB PATROL SERVICES : GOV : PORT OF NEWPORT OREGON : SOUTH SIDE	KILGORE, ROBERT
10/09/2018 1801	10/09/2018 1824	0 Hr 23 Min	TCB PATROL SERVICES : GOV : PORT OF NEWPORT OREGON : SOUTH SIDE	KILGORE, ROBERT
10/09/2018 1943	10/09/2018 1957	0 Hr 14 Min	TCB PATROL SERVICES : GOV : PORT OF NEWPORT OREGON : SOUTH SIDE	KILGORE, ROBERT
10/09/2018 2153	10/09/2018 2336	1 Hr 43 Min	TCB PATROL SERVICES : GOV : PORT OF NEWPORT OREGON : SOUTH SIDE	KILGORE, ROBERT
10/10/2018 0157	10/10/2018 0255	0 Hr 58 Min	TCB PATROL SERVICES : GOV : PORT OF NEWPORT OREGON : SOUTH SIDE	KILGORE, ROBERT
10/10/2018 1819	10/10/2018 1841	0 Hr 22 Min	TCB PATROL SERVICES : GOV : PORT OF NEWPORT OREGON : SOUTH SIDE	KILGORE, ROBERT
10/10/2018 2000	10/10/2018 2026	0 Hr 26 Min	TCB PATROL SERVICES : GOV : PORT OF NEWPORT OREGON : SOUTH SIDE	KILGORE, ROBERT
10/10/2018 2129	10/10/2018 2225	0 Hr 56 Min	TCB PATROL SERVICES : GOV : PORT OF NEWPORT OREGON : SOUTH SIDE	KILGORE, ROBERT
10/10/2018 2323	10/10/2018 2359	0 Hr 36 Min	TCB PATROL SERVICES : GOV : PORT OF NEWPORT OREGON : SOUTH SIDE	KILGORE, ROBERT
10/11/2018 1812	10/11/2018 1900	0 Hr 48 Min	TCB PATROL SERVICES : GOV : PORT OF NEWPORT OREGON : SOUTH SIDE	SILVIA, JAMES
10/11/2018 2044	10/11/2018 2122	0 Hr 38 Min	TCB PATROL SERVICES : GOV : PORT OF NEWPORT OREGON : SOUTH SIDE	SILVIA, JAMES
10/11/2018 2249	10/12/2018 0030	1 Hr 41 Min	TCB PATROL SERVICES : GOV : PORT OF NEWPORT OREGON : SOUTH SIDE	SILVIA, JAMES
10/12/2018 0007	10/12/2018 0027	0 Hr 20 Min	TCB PATROL SERVICES : GOV : PORT OF NEWPORT OREGON : SOUTH SIDE : BOAT LAUNCH : MARINA STORE	SILVIA, JAMES
10/12/2018 0240	10/12/2018 0258	0 Hr 18 Min	TCB PATROL SERVICES : GOV : PORT OF NEWPORT OREGON : SOUTH SIDE	SILVIA, JAMES
10/12/2018 1805	10/12/2018 1907	1 Hr 2 Min	TCB PATROL SERVICES : GOV : PORT OF NEWPORT OREGON : SOUTH SIDE	VALENTINE, DONALD
10/12/2018 1944	10/12/2018 2003	0 Hr 19 Min	TCB PATROL SERVICES : GOV : PORT OF NEWPORT OREGON : SOUTH SIDE	JACOB FREDENBURG
10/12/2018 2048	10/12/2018 2327	2 Hr 39 Min	TCB PATROL SERVICES : GOV : PORT OF NEWPORT OREGON : SOUTH SIDE	JACOB FREDENBURG
10/13/2018 0110	10/13/2018 0120	0 Hr 10 Min	TCB PATROL SERVICES : GOV : PORT OF NEWPORT OREGON : SOUTH SIDE	JACOB FREDENBURG

10/13/2018 0150	10/13/2018 0341	1 Hr 51 Min	TCB PATROL SERVICES : GOV : PORT OF NEWPORT OREGON : SOUTH SIDE	SILVIA, JAMES
10/13/2018 0404	10/13/2018 0447	0 Hr 43 Min	TCB PATROL SERVICES : GOV : PORT OF NEWPORT OREGON : SOUTH SIDE	SILVIA, JAMES
10/13/2018 0408	10/13/2018 0426	0 Hr 18 Min	TCB PATROL SERVICES : GOV : PORT OF NEWPORT OREGON : SOUTH SIDE : BOAT LAUNCH : MARINA STORE	SILVIA, JAMES
10/13/2018 1810	10/13/2018 1902	0 Hr 52 Min	TCB PATROL SERVICES : GOV : PORT OF NEWPORT OREGON : SOUTH SIDE	JACOB FREDENBURG
10/13/2018 2037	10/13/2018 2224	1 Hr 47 Min	TCB PATROL SERVICES : GOV : PORT OF NEWPORT OREGON : SOUTH SIDE	JACOB FREDENBURG
10/14/2018 0031	10/14/2018 0152	1 Hr 21 Min	TCB PATROL SERVICES : GOV : PORT OF NEWPORT OREGON : SOUTH SIDE	JACOB FREDENBURG
10/14/2018 0441	10/14/2018 0501	0 Hr 20 Min	TCB PATROL SERVICES : GOV : PORT OF NEWPORT OREGON : SOUTH SIDE	JACOB FREDENBURG
10/14/2018 1818	10/14/2018 1841	0 Hr 23 Min	TCB PATROL SERVICES : GOV : PORT OF NEWPORT OREGON : SOUTH SIDE	KILGORE, ROBERT
10/14/2018 2236	10/15/2018 0148	3 Hr 12 Min	TCB PATROL SERVICES : GOV : PORT OF NEWPORT OREGON : SOUTH SIDE	KILGORE, ROBERT
10/15/2018 0202	10/15/2018 0337	1 Hr 35 Min	TCB PATROL SERVICES : GOV : PORT OF NEWPORT OREGON : SOUTH SIDE	KILGORE, ROBERT
10/15/2018 0519	10/15/2018 0555	0 Hr 36 Min	TCB PATROL SERVICES : GOV : PORT OF NEWPORT OREGON : SOUTH SIDE	KILGORE, ROBERT
10/15/2018 1818	10/15/2018 1836	0 Hr 18 Min	TCB PATROL SERVICES : GOV : PORT OF NEWPORT OREGON : SOUTH SIDE	KILGORE, ROBERT
10/15/2018 2217	10/16/2018 0217	4 Hr 0 Min	TCB PATROL SERVICES : GOV : PORT OF NEWPORT OREGON : SOUTH SIDE	KILGORE, ROBERT
10/16/2018 1807	10/16/2018 1836	0 Hr 29 Min	TCB PATROL SERVICES : GOV : PORT OF NEWPORT OREGON : SOUTH SIDE	VALENTINE, DONALD
10/16/2018 1931	10/16/2018 1947	0 Hr 16 Min	TCB PATROL SERVICES : GOV : PORT OF NEWPORT OREGON : SOUTH SIDE	VALENTINE, DONALD
10/16/2018 2104	10/16/2018 2225	1 Hr 21 Min	TCB PATROL SERVICES : GOV : PORT OF NEWPORT OREGON : SOUTH SIDE	VALENTINE, DONALD
10/17/2018 0006	10/17/2018 0124	1 Hr 18 Min	TCB PATROL SERVICES : GOV : PORT OF NEWPORT OREGON : SOUTH SIDE	VALENTINE, DONALD
10/17/2018 1809	10/17/2018 1827	0 Hr 18 Min	TCB PATROL SERVICES : GOV : PORT OF NEWPORT OREGON : SOUTH SIDE	KILGORE, ROBERT
10/17/2018 1958	10/17/2018 2206	2 Hr 8 Min	TCB PATROL SERVICES : GOV : PORT OF NEWPORT OREGON : SOUTH SIDE	KILGORE, ROBERT
10/17/2018 2259	10/17/2018 2346	0 Hr 47 Min	TCB PATROL SERVICES : GOV : PORT OF NEWPORT OREGON : SOUTH SIDE	KILGORE, ROBERT
10/18/2018 0130	10/18/2018 0156	0 Hr 26 Min	TCB PATROL SERVICES : GOV : PORT OF NEWPORT OREGON : SOUTH SIDE	SILVIA, JAMES

10/18/2018 0145	10/18/2018 0155	0 Hr 10 Min	TCB PATROL SERVICES : GOV : PORT OF NEWPORT OREGON : SOUTH SIDE : BOAT LAUNCH : MARINA STORE	SILVIA, JAMES
10/18/2018 1800	10/18/2018 1816	0 Hr 16 Min	TCB PATROL SERVICES : GOV : PORT OF NEWPORT OREGON : SOUTH SIDE	VALENTINE, DONALD
10/18/2018 2109	10/18/2018 2243	1 Hr 34 Min	TCB PATROL SERVICES : GOV : PORT OF NEWPORT OREGON : SOUTH SIDE	VALENTINE, DONALD
10/19/2018 0012	10/19/2018 0046	0 Hr 34 Min	TCB PATROL SERVICES : GOV : PORT OF NEWPORT OREGON : SOUTH SIDE	VALENTINE, DONALD
10/19/2018 0153	10/19/2018 0250	0 Hr 57 Min	TCB PATROL SERVICES : GOV : PORT OF NEWPORT OREGON : SOUTH SIDE	SILVIA, JAMES
10/19/2018 1756	10/19/2018 1825	0 Hr 29 Min	TCB PATROL SERVICES : GOV : PORT OF NEWPORT OREGON : SOUTH SIDE	VALENTINE, DONALD
10/19/2018 2047	10/19/2018 2107	0 Hr 20 Min	TCB PATROL SERVICES : GOV : PORT OF NEWPORT OREGON : SOUTH SIDE	VALENTINE, DONALD
10/20/2018 0003	10/20/2018 0044	0 Hr 41 Min	TCB PATROL SERVICES : GOV : PORT OF NEWPORT OREGON : SOUTH SIDE	VALENTINE, DONALD
10/20/2018 0141	10/20/2018 0217	0 Hr 36 Min	TCB PATROL SERVICES : GOV : PORT OF NEWPORT OREGON : SOUTH SIDE	SILVIA, JAMES
10/20/2018 1805	10/20/2018 1837	0 Hr 32 Min	TCB PATROL SERVICES : GOV : PORT OF NEWPORT OREGON : SOUTH SIDE	JACOB FREDENBURG
10/20/2018 2059	10/20/2018 2213	1 Hr 14 Min	TCB PATROL SERVICES : GOV : PORT OF NEWPORT OREGON : SOUTH SIDE	JACOB FREDENBURG
10/20/2018 2100	10/20/2018 2213	1 Hr 13 Min	SOUTH SIDE	BVANDYKE
10/21/2018 0010	10/21/2018 0048	0 Hr 38 Min	TCB PATROL SERVICES : GOV : PORT OF NEWPORT OREGON : SOUTH SIDE	JACOB FREDENBURG
10/21/2018 0244	10/21/2018 0350	1 Hr 6 Min	TCB PATROL SERVICES : GOV : PORT OF NEWPORT OREGON : SOUTH SIDE	JACOB FREDENBURG
10/21/2018 0509	10/21/2018 0535	0 Hr 26 Min	TCB PATROL SERVICES : GOV : PORT OF NEWPORT OREGON : SOUTH SIDE	SILVIA, JAMES
10/21/2018 1829	10/21/2018 1849	0 Hr 20 Min	TCB PATROL SERVICES : GOV : PORT OF NEWPORT OREGON : SOUTH SIDE	KILGORE, ROBERT
10/21/2018 2144	10/21/2018 2324	1 Hr 40 Min	TCB PATROL SERVICES : GOV : PORT OF NEWPORT OREGON : SOUTH SIDE	KILGORE, ROBERT
10/22/2018 0146	10/22/2018 0419	2 Hr 33 Min	TCB PATROL SERVICES : GOV : PORT OF NEWPORT OREGON : SOUTH SIDE	KILGORE, ROBERT
10/22/2018 1934	10/22/2018 2036	1 Hr 2 Min	TCB PATROL SERVICES : GOV : PORT OF NEWPORT OREGON : SOUTH SIDE	JACOB FREDENBURG
10/22/2018 2204	10/22/2018 2231	0 Hr 27 Min	TCB PATROL SERVICES : GOV : PORT OF NEWPORT OREGON : SOUTH SIDE	JACOB FREDENBURG
10/22/2018 2254	10/23/2018 0010	1 Hr 16 Min	TCB PATROL SERVICES : GOV : PORT OF NEWPORT OREGON : SOUTH SIDE	VALENTINE, DONALD
10/23/2018 0222	10/23/2018 0354	1 Hr 32 Min	TCB PATROL SERVICES : GOV : PORT OF NEWPORT OREGON : SOUTH SIDE	KILGORE, ROBERT

10/23/2018 1838	10/23/2018 1853	0 Hr 15 Min	TCB PATROL SERVICES : GOV : PORT OF NEWPORT OREGON : SOUTH SIDE	FISHER, LEANNE
10/23/2018 2145	10/23/2018 2236	0 Hr 51 Min	TCB PATROL SERVICES : GOV : PORT OF NEWPORT OREGON : SOUTH SIDE	FISHER, LEANNE
10/24/2018 0117	10/24/2018 0145	0 Hr 28 Min	TCB PATROL SERVICES : GOV : PORT OF NEWPORT OREGON : SOUTH SIDE	KILGORE, ROBERT
10/24/2018 0251	10/24/2018 0353	1 Hr 2 Min	TCB PATROL SERVICES : GOV : PORT OF NEWPORT OREGON : SOUTH SIDE	KILGORE, ROBERT
10/24/2018 2008	10/24/2018 2149	1 Hr 41 Min	TCB PATROL SERVICES : GOV : PORT OF NEWPORT OREGON : SOUTH SIDE	FISHER, LEANNE
10/25/2018 0022	10/25/2018 0102	0 Hr 40 Min	TCB PATROL SERVICES : GOV : PORT OF NEWPORT OREGON : SOUTH SIDE	FISHER, LEANNE
10/25/2018 0151	10/25/2018 0253	1 Hr 2 Min	TCB PATROL SERVICES : GOV : PORT OF NEWPORT OREGON : SOUTH SIDE	SILVIA, JAMES
10/25/2018 0209	10/25/2018 0229	0 Hr 20 Min	TCB PATROL SERVICES : GOV : PORT OF NEWPORT OREGON : SOUTH SIDE : BOAT LAUNCH : MARINA STORE	SILVIA, JAMES
10/25/2018 0425	10/25/2018 0617	1 Hr 52 Min	TCB PATROL SERVICES : GOV : PORT OF NEWPORT OREGON : SOUTH SIDE	SILVIA, JAMES
10/25/2018 1810	10/25/2018 1828	0 Hr 18 Min	TCB PATROL SERVICES : GOV : PORT OF NEWPORT OREGON : SOUTH SIDE	FISHER, LEANNE
10/26/2018 0037	10/26/2018 0044	0 Hr 7 Min	TCB PATROL SERVICES : GOV : PORT OF NEWPORT OREGON : SOUTH SIDE	FISHER, LEANNE
10/26/2018 0046	10/26/2018 0248	2 Hr 2 Min	TCB PATROL SERVICES : GOV : PORT OF NEWPORT OREGON : SOUTH SIDE	SILVIA, JAMES
10/26/2018 0401	10/26/2018 0457	0 Hr 56 Min	TCB PATROL SERVICES : GOV : PORT OF NEWPORT OREGON : SOUTH SIDE	SILVIA, JAMES
10/26/2018 1758	10/26/2018 1906	1 Hr 8 Min	TCB PATROL SERVICES : GOV : PORT OF NEWPORT OREGON : SOUTH SIDE	SILVIA, JAMES
10/26/2018 2008	10/26/2018 2108	1 Hr 0 Min	TCB PATROL SERVICES : GOV : PORT OF NEWPORT OREGON : SOUTH SIDE	SILVIA, JAMES
10/26/2018 2043	10/26/2018 2108	0 Hr 25 Min	TCB PATROL SERVICES : GOV : PORT OF NEWPORT OREGON : SOUTH SIDE : BOAT LAUNCH : MARINA STORE	SILVIA, JAMES
10/27/2018 0118	10/27/2018 0230	1 Hr 12 Min	TCB PATROL SERVICES : GOV : PORT OF NEWPORT OREGON : SOUTH SIDE	SILVIA, JAMES
10/27/2018 0321	10/27/2018 0343	0 Hr 22 Min	TCB PATROL SERVICES : GOV : PORT OF NEWPORT OREGON : SOUTH SIDE	JACOB FREDENBURG
10/27/2018 1810	10/27/2018 1854	0 Hr 44 Min	TCB PATROL SERVICES : GOV : PORT OF NEWPORT OREGON : SOUTH SIDE	SILVIA, JAMES
10/27/2018 2310	10/28/2018 0033	1 Hr 23 Min	TCB PATROL SERVICES : GOV : PORT OF NEWPORT OREGON : SOUTH SIDE	SILVIA, JAMES
10/28/2018 0320	10/28/2018 0453	1 Hr 33 Min	TCB PATROL SERVICES : GOV : PORT OF NEWPORT OREGON : SOUTH SIDE	SILVIA, JAMES

10/28/2018 1808	10/28/2018 1836	0 Hr 28 Min	TCB PATROL SERVICES : GOV : PORT OF NEWPORT OREGON : SOUTH SIDE	JACOB FREDENBURG
10/28/2018 2155	10/28/2018 2307	1 Hr 12 Min	TCB PATROL SERVICES : GOV : PORT OF NEWPORT OREGON : SOUTH SIDE	JACOB FREDENBURG
10/28/2018 2353	10/29/2018 0141	1 Hr 48 Min	TCB PATROL SERVICES : GOV : PORT OF NEWPORT OREGON : SOUTH SIDE	JACOB FREDENBURG
10/29/2018 1939	10/29/2018 2126	1 Hr 47 Min	TCB PATROL SERVICES : GOV : PORT OF NEWPORT OREGON : SOUTH SIDE	KILGORE, ROBERT
10/30/2018 0016	10/30/2018 0054	0 Hr 38 Min	TCB PATROL SERVICES : GOV : PORT OF NEWPORT OREGON : SOUTH SIDE	KILGORE, ROBERT
10/30/2018 0256	10/30/2018 0429	1 Hr 33 Min	TCB PATROL SERVICES : GOV : PORT OF NEWPORT OREGON : SOUTH SIDE	KILGORE, ROBERT
10/30/2018 0502	10/30/2018 0519	0 Hr 17 Min	TCB PATROL SERVICES : GOV : PORT OF NEWPORT OREGON : SOUTH SIDE	KILGORE, ROBERT
10/30/2018 1752	10/30/2018 1812	0 Hr 20 Min	TCB PATROL SERVICES : GOV : PORT OF NEWPORT OREGON : SOUTH SIDE	VALENTINE, DONALD
10/30/2018 2156	10/30/2018 2224	0 Hr 28 Min	TCB PATROL SERVICES : GOV : PORT OF NEWPORT OREGON : SOUTH SIDE	VALENTINE, DONALD
10/30/2018 2341	10/30/2018 2351	0 Hr 10 Min	TCB PATROL SERVICES : GOV : PORT OF NEWPORT OREGON : SOUTH SIDE	VALENTINE, DONALD
10/31/2018 0111	10/31/2018 0125	0 Hr 14 Min	TCB PATROL SERVICES : GOV : PORT OF NEWPORT OREGON : SOUTH SIDE	VALENTINE, DONALD
10/31/2018 0200	10/31/2018 0355	1 Hr 55 Min	TCB PATROL SERVICES : GOV : PORT OF NEWPORT OREGON : SOUTH SIDE	KILGORE, ROBERT
10/31/2018 1824	10/31/2018 1834	0 Hr 10 Min	TCB PATROL SERVICES : GOV : PORT OF NEWPORT OREGON : SOUTH SIDE	FISHER, LEANNE
10/31/2018 2001	10/31/2018 2133	1 Hr 32 Min	TCB PATROL SERVICES : GOV : PORT OF NEWPORT OREGON : SOUTH SIDE	FISHER, LEANNE
10/31/2018 2134	10/31/2018 2205	0 Hr 31 Min	TCB PATROL SERVICES : GOV : PORT OF NEWPORT OREGON : SOUTH SIDE	FISHER, LEANNE

PORT OF NEWPORT OREGON

Total Man Hours Primary Officer : 119 Hr 0 Min

Total Events : 132

Total Man Hours Backup Officer : 5 Hr 11 Min

Activity Type Percentage : 46%

PATROL CHECK

Total Man Hours : 124 Hr 11 Min

RV PARK PATROL				
<u>Event Start</u>	<u>Event End</u>	<u>Man Hours</u>	<u>Location</u>	<u>Officer</u>
10/01/2018 0139	10/01/2018 0145	0 Hr 6 Min	TCB PATROL SERVICES : GOV : PORT OF NEWPORT OREGON : SOUTH SIDE : RV PARKS	KILGORE, ROBERT

10/01/2018 2015	10/01/2018 2024	0 Hr 9 Min	TCB PATROL SERVICES : GOV : PORT OF NEWPORT OREGON : SOUTH SIDE : RV PARKS	KILGORE, ROBERT
10/01/2018 2130	10/01/2018 2140	0 Hr 10 Min	TCB PATROL SERVICES : GOV : PORT OF NEWPORT OREGON : SOUTH SIDE : RV PARKS	KILGORE, ROBERT
10/01/2018 2327	10/01/2018 2339	0 Hr 12 Min	TCB PATROL SERVICES : GOV : PORT OF NEWPORT OREGON : SOUTH SIDE : RV PARKS	KILGORE, ROBERT
10/02/2018 2220	10/02/2018 2230	0 Hr 10 Min	TCB PATROL SERVICES : GOV : PORT OF NEWPORT OREGON : SOUTH SIDE : RV PARKS	KILGORE, ROBERT
10/03/2018 0124	10/03/2018 0131	0 Hr 7 Min	TCB PATROL SERVICES : GOV : PORT OF NEWPORT OREGON : SOUTH SIDE : RV PARKS	KILGORE, ROBERT
10/03/2018 1841	10/03/2018 1848	0 Hr 7 Min	TCB PATROL SERVICES : GOV : PORT OF NEWPORT OREGON : SOUTH SIDE : RV PARKS	KILGORE, ROBERT
10/03/2018 2148	10/03/2018 2200	0 Hr 12 Min	TCB PATROL SERVICES : GOV : PORT OF NEWPORT OREGON : SOUTH SIDE : RV PARKS	KILGORE, ROBERT
10/03/2018 2319	10/03/2018 2325	0 Hr 6 Min	TCB PATROL SERVICES : GOV : PORT OF NEWPORT OREGON : SOUTH SIDE : RV PARKS	KILGORE, ROBERT
10/04/2018 1815	10/04/2018 1829	0 Hr 14 Min	TCB PATROL SERVICES : GOV : PORT OF NEWPORT OREGON : SOUTH SIDE : RV PARKS	SILVIA, JAMES
10/04/2018 2203	10/04/2018 2210	0 Hr 7 Min	TCB PATROL SERVICES : GOV : PORT OF NEWPORT OREGON : SOUTH SIDE : RV PARKS	SILVIA, JAMES
10/05/2018 0312	10/05/2018 0317	0 Hr 5 Min	TCB PATROL SERVICES : GOV : PORT OF NEWPORT OREGON : SOUTH SIDE : RV PARKS	SILVIA, JAMES
10/05/2018 1854	10/05/2018 1906	0 Hr 12 Min	TCB PATROL SERVICES : GOV : PORT OF NEWPORT OREGON : SOUTH SIDE : RV PARKS	JACOB FREDENBURG
10/05/2018 1855	10/05/2018 1906	0 Hr 11 Min	RV PARKS	VALENTINE, DONALD
10/05/2018 2142	10/05/2018 2158	0 Hr 16 Min	RV PARKS	VALENTINE, DONALD
10/05/2018 2142	10/05/2018 2158	0 Hr 16 Min	TCB PATROL SERVICES : GOV : PORT OF NEWPORT OREGON : SOUTH SIDE : RV PARKS	JACOB FREDENBURG
10/06/2018 0355	10/06/2018 0405	0 Hr 10 Min	TCB PATROL SERVICES : GOV : PORT OF NEWPORT OREGON : SOUTH SIDE : RV PARKS	JACOB FREDENBURG
10/06/2018 1826	10/06/2018 1839	0 Hr 13 Min	TCB PATROL SERVICES : GOV : PORT OF NEWPORT OREGON : SOUTH SIDE : RV PARKS	JACOB FREDENBURG
10/06/2018 2215	10/06/2018 2221	0 Hr 6 Min	TCB PATROL SERVICES : GOV : PORT OF NEWPORT OREGON : SOUTH SIDE : RV PARKS	JACOB FREDENBURG
10/07/2018 0329	10/07/2018 0339	0 Hr 10 Min	TCB PATROL SERVICES : GOV : PORT OF NEWPORT OREGON : SOUTH SIDE : RV PARKS	JACOB FREDENBURG
10/07/2018 1846	10/07/2018 1854	0 Hr 8 Min	TCB PATROL SERVICES : GOV : PORT OF NEWPORT OREGON : SOUTH SIDE : RV PARKS	KILGORE, ROBERT
10/07/2018 2237	10/07/2018 2243	0 Hr 6 Min	TCB PATROL SERVICES : GOV : PORT OF NEWPORT OREGON : SOUTH SIDE : RV PARKS	KILGORE, ROBERT
10/08/2018 1826	10/08/2018 1837	0 Hr 11 Min	TCB PATROL SERVICES : GOV : PORT OF NEWPORT OREGON : SOUTH SIDE : RV PARKS	JACOB FREDENBURG

10/09/2018 0335	10/09/2018 0342	0 Hr 7 Min	TCB PATROL SERVICES : GOV : PORT OF NEWPORT OREGON : SOUTH SIDE : RV PARKS	KILGORE, ROBERT
10/09/2018 1817	10/09/2018 1823	0 Hr 6 Min	TCB PATROL SERVICES : GOV : PORT OF NEWPORT OREGON : SOUTH SIDE : RV PARKS	KILGORE, ROBERT
10/09/2018 1951	10/09/2018 1957	0 Hr 6 Min	TCB PATROL SERVICES : GOV : PORT OF NEWPORT OREGON : SOUTH SIDE : RV PARKS	KILGORE, ROBERT
10/09/2018 2323	10/09/2018 2329	0 Hr 6 Min	TCB PATROL SERVICES : GOV : PORT OF NEWPORT OREGON : SOUTH SIDE : RV PARKS	KILGORE, ROBERT
10/10/2018 1835	10/10/2018 1842	0 Hr 7 Min	TCB PATROL SERVICES : GOV : PORT OF NEWPORT OREGON : SOUTH SIDE : RV PARKS	KILGORE, ROBERT
10/10/2018 2136	10/10/2018 2145	0 Hr 9 Min	TCB PATROL SERVICES : GOV : PORT OF NEWPORT OREGON : SOUTH SIDE : RV PARKS	KILGORE, ROBERT
10/10/2018 2323	10/10/2018 2332	0 Hr 9 Min	TCB PATROL SERVICES : GOV : PORT OF NEWPORT OREGON : SOUTH SIDE : RV PARKS	KILGORE, ROBERT
10/11/2018 1829	10/11/2018 1856	0 Hr 27 Min	TCB PATROL SERVICES : GOV : PORT OF NEWPORT OREGON : SOUTH SIDE : RV PARKS	SILVIA, JAMES
10/11/2018 2059	10/11/2018 2113	0 Hr 14 Min	TCB PATROL SERVICES : GOV : PORT OF NEWPORT OREGON : SOUTH SIDE : RV PARKS	SILVIA, JAMES
10/12/2018 0243	10/12/2018 0257	0 Hr 14 Min	TCB PATROL SERVICES : GOV : PORT OF NEWPORT OREGON : SOUTH SIDE : RV PARKS	SILVIA, JAMES
10/12/2018 1832	10/12/2018 1849	0 Hr 17 Min	TCB PATROL SERVICES : GOV : PORT OF NEWPORT OREGON : SOUTH SIDE : RV PARKS	VALENTINE, DONALD
10/12/2018 2203	10/12/2018 2219	0 Hr 16 Min	TCB PATROL SERVICES : GOV : PORT OF NEWPORT OREGON : SOUTH SIDE : RV PARKS	JACOB FREDENBURG
10/13/2018 0150	10/13/2018 0158	0 Hr 8 Min	TCB PATROL SERVICES : GOV : PORT OF NEWPORT OREGON : SOUTH SIDE : RV PARKS	SILVIA, JAMES
10/13/2018 1847	10/13/2018 1901	0 Hr 14 Min	TCB PATROL SERVICES : GOV : PORT OF NEWPORT OREGON : SOUTH SIDE : RV PARKS	JACOB FREDENBURG
10/13/2018 2147	10/13/2018 2157	0 Hr 10 Min	TCB PATROL SERVICES : GOV : PORT OF NEWPORT OREGON : SOUTH SIDE : RV PARKS	JACOB FREDENBURG
10/13/2018 2147	10/13/2018 2157	0 Hr 10 Min	RV PARKS	BVANDYKE
10/14/2018 0138	10/14/2018 0147	0 Hr 9 Min	TCB PATROL SERVICES : GOV : PORT OF NEWPORT OREGON : SOUTH SIDE : RV PARKS	JACOB FREDENBURG
10/14/2018 1828	10/14/2018 1841	0 Hr 13 Min	TCB PATROL SERVICES : GOV : PORT OF NEWPORT OREGON : SOUTH SIDE : RV PARKS	KILGORE, ROBERT
10/14/2018 2238	10/14/2018 2249	0 Hr 11 Min	TCB PATROL SERVICES : GOV : PORT OF NEWPORT OREGON : SOUTH SIDE : RV PARKS	KILGORE, ROBERT
10/15/2018 0138	10/15/2018 0143	0 Hr 5 Min	TCB PATROL SERVICES : GOV : PORT OF NEWPORT OREGON : SOUTH SIDE : RV PARKS	KILGORE, ROBERT
10/15/2018 1829	10/15/2018 1836	0 Hr 7 Min	TCB PATROL SERVICES : GOV : PORT OF NEWPORT OREGON : SOUTH SIDE : RV PARKS	KILGORE, ROBERT
10/15/2018 2224	10/15/2018 2232	0 Hr 8 Min	TCB PATROL SERVICES : GOV : PORT OF NEWPORT OREGON : SOUTH SIDE : RV PARKS	KILGORE, ROBERT

10/16/2018 1827	10/16/2018 1835	0 Hr 8 Min	TCB PATROL SERVICES : GOV : PORT OF NEWPORT OREGON : SOUTH SIDE : RV PARKS	VALENTINE, DONALD
10/16/2018 2105	10/16/2018 2111	0 Hr 6 Min	TCB PATROL SERVICES : GOV : PORT OF NEWPORT OREGON : SOUTH SIDE : RV PARKS	VALENTINE, DONALD
10/17/2018 0009	10/17/2018 0018	0 Hr 9 Min	TCB PATROL SERVICES : GOV : PORT OF NEWPORT OREGON : SOUTH SIDE : RV PARKS	VALENTINE, DONALD
10/17/2018 1821	10/17/2018 1827	0 Hr 6 Min	TCB PATROL SERVICES : GOV : PORT OF NEWPORT OREGON : SOUTH SIDE : RV PARKS	KILGORE, ROBERT
10/17/2018 2145	10/17/2018 2156	0 Hr 11 Min	TCB PATROL SERVICES : GOV : PORT OF NEWPORT OREGON : SOUTH SIDE : RV PARKS	KILGORE, ROBERT
10/17/2018 2301	10/17/2018 2304	0 Hr 3 Min	TCB PATROL SERVICES : GOV : PORT OF NEWPORT OREGON : SOUTH SIDE : RV PARKS	KILGORE, ROBERT
10/18/2018 1810	10/18/2018 1816	0 Hr 6 Min	TCB PATROL SERVICES : GOV : PORT OF NEWPORT OREGON : SOUTH SIDE : RV PARKS	VALENTINE, DONALD
10/18/2018 2110	10/18/2018 2116	0 Hr 6 Min	TCB PATROL SERVICES : GOV : PORT OF NEWPORT OREGON : SOUTH SIDE : RV PARKS	VALENTINE, DONALD
10/19/2018 0013	10/19/2018 0017	0 Hr 4 Min	TCB PATROL SERVICES : GOV : PORT OF NEWPORT OREGON : SOUTH SIDE : RV PARKS	VALENTINE, DONALD
10/19/2018 1820	10/19/2018 1823	0 Hr 3 Min	TCB PATROL SERVICES : GOV : PORT OF NEWPORT OREGON : SOUTH SIDE : RV PARKS	VALENTINE, DONALD
10/19/2018 2057	10/19/2018 2102	0 Hr 5 Min	TCB PATROL SERVICES : GOV : PORT OF NEWPORT OREGON : SOUTH SIDE : RV PARKS	VALENTINE, DONALD
10/20/2018 0005	10/20/2018 0010	0 Hr 5 Min	TCB PATROL SERVICES : GOV : PORT OF NEWPORT OREGON : SOUTH SIDE : RV PARKS	VALENTINE, DONALD
10/20/2018 1828	10/20/2018 1837	0 Hr 9 Min	TCB PATROL SERVICES : GOV : PORT OF NEWPORT OREGON : SOUTH SIDE : RV PARKS	JACOB FREDENBURG
10/20/2018 2142	10/20/2018 2148	0 Hr 6 Min	TCB PATROL SERVICES : GOV : PORT OF NEWPORT OREGON : SOUTH SIDE : RV PARKS	JACOB FREDENBURG
10/20/2018 2142	10/20/2018 2148	0 Hr 6 Min	RV PARKS	BVANDYKE
10/21/2018 0343	10/21/2018 0350	0 Hr 7 Min	TCB PATROL SERVICES : GOV : PORT OF NEWPORT OREGON : SOUTH SIDE : RV PARKS	JACOB FREDENBURG
10/21/2018 1840	10/21/2018 1849	0 Hr 9 Min	TCB PATROL SERVICES : GOV : PORT OF NEWPORT OREGON : SOUTH SIDE : RV PARKS	KILGORE, ROBERT
10/21/2018 2150	10/21/2018 2201	0 Hr 11 Min	TCB PATROL SERVICES : GOV : PORT OF NEWPORT OREGON : SOUTH SIDE : RV PARKS	KILGORE, ROBERT
10/22/2018 0151	10/22/2018 0157	0 Hr 6 Min	TCB PATROL SERVICES : GOV : PORT OF NEWPORT OREGON : SOUTH SIDE : RV PARKS	KILGORE, ROBERT
10/22/2018 2018	10/22/2018 2024	0 Hr 6 Min	TCB PATROL SERVICES : GOV : PORT OF NEWPORT OREGON : SOUTH SIDE : RV PARKS	JACOB FREDENBURG
10/22/2018 2204	10/22/2018 2225	0 Hr 21 Min	TCB PATROL SERVICES : GOV : PORT OF NEWPORT OREGON : SOUTH SIDE : RV PARKS	JACOB FREDENBURG
10/22/2018 2257	10/22/2018 2304	0 Hr 7 Min	TCB PATROL SERVICES : GOV : PORT OF NEWPORT OREGON : SOUTH SIDE : RV PARKS	VALENTINE, DONALD

10/23/2018 1842	10/23/2018 1850	0 Hr 8 Min	TCB PATROL SERVICES : GOV : PORT OF NEWPORT OREGON : SOUTH SIDE : RV PARKS	FISHER, LEANNE
10/24/2018 0137	10/24/2018 0140	0 Hr 3 Min	TCB PATROL SERVICES : GOV : PORT OF NEWPORT OREGON : SOUTH SIDE : RV PARKS	KILGORE, ROBERT
10/24/2018 2009	10/24/2018 2015	0 Hr 6 Min	TCB PATROL SERVICES : GOV : PORT OF NEWPORT OREGON : SOUTH SIDE : RV PARKS	FISHER, LEANNE
10/25/2018 0021	10/25/2018 0031	0 Hr 10 Min	TCB PATROL SERVICES : GOV : PORT OF NEWPORT OREGON : SOUTH SIDE : RV PARKS	FISHER, LEANNE
10/25/2018 0428	10/25/2018 0437	0 Hr 9 Min	TCB PATROL SERVICES : GOV : PORT OF NEWPORT OREGON : SOUTH SIDE : RV PARKS	SILVIA, JAMES
10/25/2018 1811	10/25/2018 1820	0 Hr 9 Min	TCB PATROL SERVICES : GOV : PORT OF NEWPORT OREGON : SOUTH SIDE : RV PARKS	FISHER, LEANNE
10/26/2018 0211	10/26/2018 0215	0 Hr 4 Min	TCB PATROL SERVICES : GOV : PORT OF NEWPORT OREGON : SOUTH SIDE : RV PARKS	SILVIA, JAMES
10/26/2018 0439	10/26/2018 0439	0 Hr 0 Min	TCB PATROL SERVICES : GOV : PORT OF NEWPORT OREGON : SOUTH SIDE : RV PARKS	SILVIA, JAMES
10/26/2018 1813	10/26/2018 1829	0 Hr 16 Min	TCB PATROL SERVICES : GOV : PORT OF NEWPORT OREGON : SOUTH SIDE : RV PARKS	SILVIA, JAMES
10/27/2018 0217	10/27/2018 0228	0 Hr 11 Min	TCB PATROL SERVICES : GOV : PORT OF NEWPORT OREGON : SOUTH SIDE : RV PARKS	SILVIA, JAMES
10/27/2018 0328	10/27/2018 0338	0 Hr 10 Min	TCB PATROL SERVICES : GOV : PORT OF NEWPORT OREGON : SOUTH SIDE : RV PARKS	JACOB FREDENBURG
10/27/2018 1817	10/27/2018 1834	0 Hr 17 Min	TCB PATROL SERVICES : GOV : PORT OF NEWPORT OREGON : SOUTH SIDE : RV PARKS	SILVIA, JAMES
10/27/2018 2313	10/27/2018 2322	0 Hr 9 Min	TCB PATROL SERVICES : GOV : PORT OF NEWPORT OREGON : SOUTH SIDE : RV PARKS	SILVIA, JAMES
10/28/2018 0345	10/28/2018 0351	0 Hr 6 Min	TCB PATROL SERVICES : GOV : PORT OF NEWPORT OREGON : SOUTH SIDE : RV PARKS	SILVIA, JAMES
10/28/2018 1826	10/28/2018 1834	0 Hr 8 Min	TCB PATROL SERVICES : GOV : PORT OF NEWPORT OREGON : SOUTH SIDE : RV PARKS	JACOB FREDENBURG
10/29/2018 0103	10/29/2018 0113	0 Hr 10 Min	TCB PATROL SERVICES : GOV : PORT OF NEWPORT OREGON : SOUTH SIDE : RV PARKS	JACOB FREDENBURG
10/29/2018 0459	10/29/2018 0506	0 Hr 7 Min	TCB PATROL SERVICES : GOV : PORT OF NEWPORT OREGON : SOUTH SIDE	JACOB FREDENBURG
10/29/2018 1940	10/29/2018 1944	0 Hr 4 Min	TCB PATROL SERVICES : GOV : PORT OF NEWPORT OREGON : SOUTH SIDE : RV PARKS	KILGORE, ROBERT
10/29/2018 2117	10/29/2018 2126	0 Hr 9 Min	TCB PATROL SERVICES : GOV : PORT OF NEWPORT OREGON : SOUTH SIDE : RV PARKS	KILGORE, ROBERT
10/30/2018 0257	10/30/2018 0302	0 Hr 5 Min	TCB PATROL SERVICES : GOV : PORT OF NEWPORT OREGON : SOUTH SIDE : RV PARKS	KILGORE, ROBERT
10/30/2018 1800	10/30/2018 1806	0 Hr 6 Min	TCB PATROL SERVICES : GOV : PORT OF NEWPORT OREGON : SOUTH SIDE : RV PARKS	VALENTINE, DONALD

10/30/2018 2205	10/30/2018 2224	0 Hr 19 Min	TCB PATROL SERVICES : GOV : PORT OF NEWPORT OREGON : SOUTH SIDE : RV PARKS	VALENTINE, DONALD
10/31/2018 0346	10/31/2018 0351	0 Hr 5 Min	TCB PATROL SERVICES : GOV : PORT OF NEWPORT OREGON : SOUTH SIDE : RV PARKS	KILGORE, ROBERT
10/31/2018 1825	10/31/2018 1832	0 Hr 7 Min	TCB PATROL SERVICES : GOV : PORT OF NEWPORT OREGON : SOUTH SIDE : RV PARKS	FISHER, LEANNE
10/31/2018 2139	10/31/2018 2145	0 Hr 6 Min	TCB PATROL SERVICES : GOV : PORT OF NEWPORT OREGON : SOUTH SIDE : RV PARKS	FISHER, LEANNE

PORT OF NEWPORT OREGON

Total Man Hours Primary Officer : 12 Hr 58 Min
Total Man Hours Backup Officer : 0 Hr 43 Min
Total Man Hours : 13 Hr 41 Min

Total Events : 92
Activity Type Percentage : 32%

RV PARK PATROL

SUSPICIOUS CIRCUMSTANCE				
<u>Event Start</u>	<u>Event End</u>	<u>Man Hours</u>	<u>Location</u>	<u>Officer</u>
10/06/2018 2156	10/06/2018 2201	0 Hr 5 Min	TCB PATROL SERVICES : GOV : PORT OF NEWPORT OREGON : SOUTH SIDE	JACOB FREDENBURG
10/10/2018 2324	10/10/2018 2333	0 Hr 9 Min	TCB PATROL SERVICES : GOV : PORT OF NEWPORT OREGON : SOUTH SIDE : RV PARKS	KILGORE, ROBERT

PORT OF NEWPORT OREGON

Total Man Hours Primary Officer : 0 Hr 14 Min
Total Man Hours Backup Officer : 0 Hr 0 Min
Total Man Hours : 0 Hr 14 Min

Total Events : 2
Activity Type Percentage : 1%

SUSPICIOUS CIRCUMSTANCE

SUSPICIOUS VEHICLE				
<u>Event Start</u>	<u>Event End</u>	<u>Man Hours</u>	<u>Location</u>	<u>Officer</u>
10/06/2018 2147	10/06/2018 2151	0 Hr 4 Min	TCB PATROL SERVICES : GOV : PORT OF NEWPORT OREGON : SOUTH SIDE	JACOB FREDENBURG
10/07/2018 0318	10/07/2018 0323	0 Hr 5 Min	TCB PATROL SERVICES : GOV : PORT OF NEWPORT OREGON : SOUTH SIDE	JACOB FREDENBURG
10/12/2018 0010	10/12/2018 0022	0 Hr 12 Min	TCB PATROL SERVICES : GOV : PORT OF NEWPORT OREGON : SOUTH SIDE	SILVIA, JAMES
10/19/2018 0207	10/19/2018 0209	0 Hr 2 Min	TCB PATROL SERVICES : GOV : PORT OF NEWPORT OREGON : SOUTH SIDE	SILVIA, JAMES
10/20/2018 2151	10/20/2018 2155	0 Hr 4 Min	TCB PATROL SERVICES : GOV : PORT OF NEWPORT OREGON : SOUTH SIDE	JACOB FREDENBURG

PORT OF NEWPORT OREGON

Total Man Hours Primary Officer : 0 Hr 27 Min

Total Events : 5

Total Man Hours Backup Officer : 0 Hr 0 Min

Activity Type Percentage : 2%

SUSPICIOUS VEHICLE

Total Man Hours : 0 Hr 27 Min

Totals For Group PORT OF NEWPORT OREGON

Group Total Man Hours Primary Officer : 135 Hr 57 Min

SubTotal Group Events : 288

Group Total Man Hours Backup Officer : 6 Hr 22 Min

Group Total Man Hours : 142 Hr 19 Min

TCB PATROL SERVICES DIVISION

CONTACT

<u>Event Start</u>	<u>Event End</u>	<u>Man Hours</u>	<u>Location</u>	<u>Officer</u>
10/26/2018 0435	10/26/2018 0439	0 Hr 4 Min	TCB PATROL SERVICES : GOV : PORT OF NEWPORT PATROL : PORT OF NEWPORT SOUTH	SILVIA, JAMES

TCB PATROL SERVICES DIVISION

Total Man Hours Primary Officer : 0 Hr 4 Min

Total Events : 1

Total Man Hours Backup Officer : 0 Hr 0 Min

Activity Type Percentage : 0%

CONTACT

Total Man Hours : 0 Hr 4 Min

Totals For Group TCB PATROL SERVICES DIVISION

Group Total Man Hours Primary Officer : 0 Hr 4 Min

SubTotal Group Events : 1

Group Total Man Hours Backup Officer : 0 Hr 0 Min

Group Total Man Hours : 0 Hr 4 Min

Grand Totals

Total Man Hours Primary Officer : 136 Hr 1 Min
Total Man Hours Backup Officer : 6 Hr 22 Min
Total Man Hours : 142 Hr 23 Min

Total Events : 289



GENERAL MANAGER'S REPORT

DATE: November 16, 2018
PERIOD: October 23, 2018 – November 16, 2018
TO: Port Commissioners
ISSUED BY: Teri Dresler, Interim General Manager

OVERVIEW:

Strategic Business Plan and Capital Facilities Plan Update is underway with two days of kick off meetings with our consultants BergerABAM on November 19 & 20. We have emailed numerous individuals inviting them to participate in either the public open house or requesting their participation in the small stakeholder interview sessions. Since I am preparing this report prior to the meetings taking place, I will report on the meetings at our monthly meeting on November 27.

Oregon Pay Equity Law project is more than half completed with all staff preparing Job Analysis Questionnaires. Those questionnaires have been reviewed by supervisors and are now in the hands of our consultant for review and analysis. The next step is to perform the compensation analysis and prepare a corrective action plan. We are on track to meet the required deadline for this work and further updates will be provided at the meeting.

The General Manager recruitment and Director of Business Operations recruitment are both open and posted on numerous web sites. We have been receiving resumes for the Director of Business Operations (10 as of today's date). Review of those resumes will begin on December 6. I will have an update from George Dunkel on the GM recruitment to report to you on November 27.

Due to scheduling conflicts on the part of our auditor, Signe Grimstad, a request for extension of time on completing/filing the audit has been requested. This is allowable under ORS 297.465(3)(a) which states, "The municipal corporation shall file the audit report with the Secretary of State within 6 months after the close of the calendar or fiscal year under audit, unless the Secretary of State, for good cause shown, grants to the municipal corporation a reasonable extension of time". The request is for an extension until February 28, 2019 with the understanding that we will strive to have the Port 2017 - 2018 Audit completed before that date. Since this is the second year that the Port has requested an extension, we will require a firm schedule from the auditor in advance of next year's audit to ensure the Port will not need an extension.