



Port of Newport

Paula Miranda, General Manager
City/Port Joint Meeting
June 28, 2021

OREGON PORTS

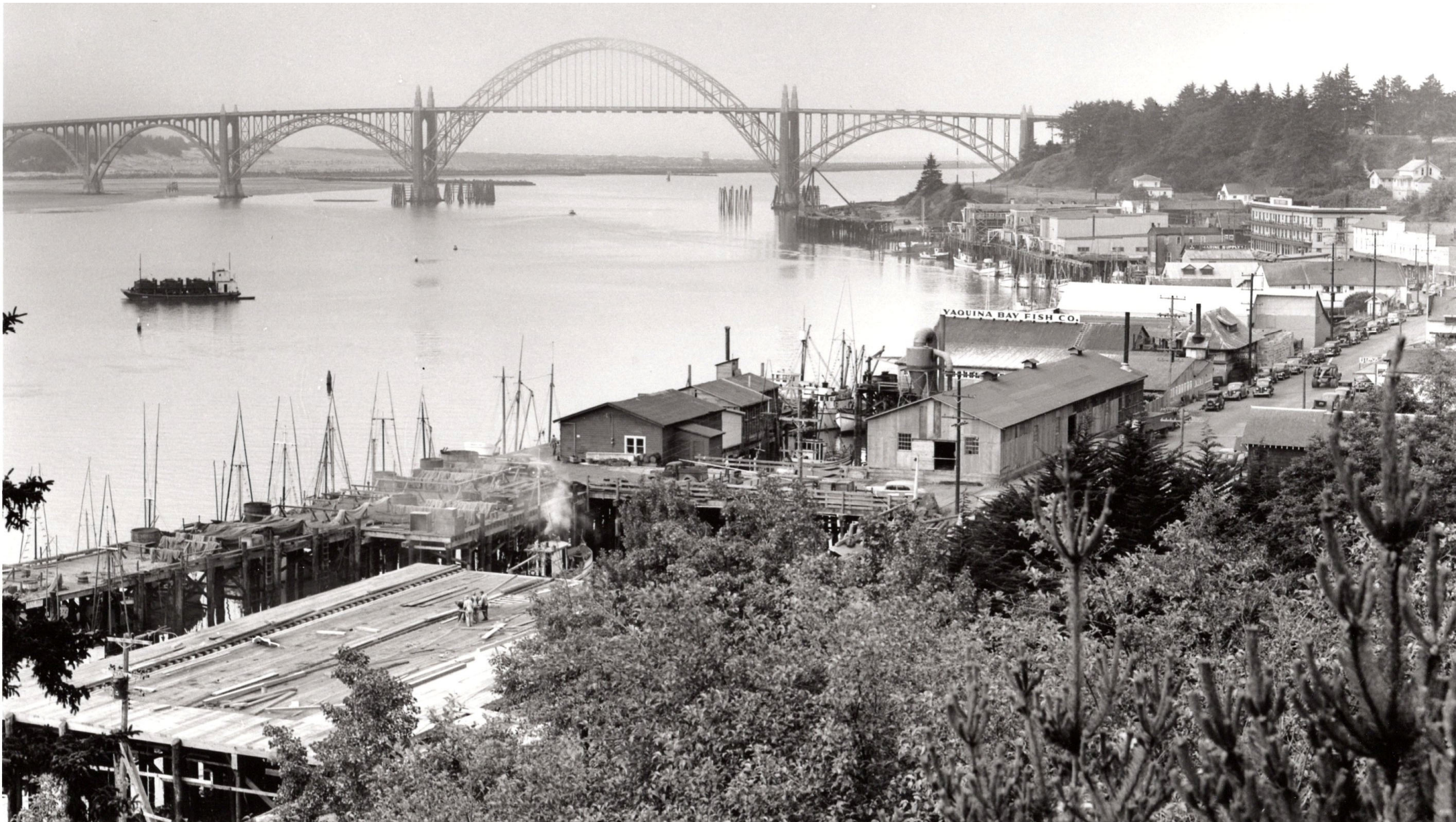
All Oregon ports are ruled under ORS 777, with the exception of the Port of Portland, which is ruled under ORS 778. Under the State Legislature Ports are considered Special Districts. Special districts are a form of local government created by a local community to meet a specific need. Oregon's 23 ports provide recreational, commercial, and economic services to residents and businesses in Oregon and beyond, serving as state, national, and international transportation gateways.

PORT OF NEWPORT HISTORY

The first meeting of Newport's Port Commission was held on May 26, 1910, where four men appointed by Governor Frank Benson proceeded to elect officers and establish the foundation of what continues to operate today as the Port of Newport.

Today there are five elected commissioners that comprised the Port of Newport Board of Commissioners. They are:

Jim Burke - President, Gil Sylvia - Vice-President, Walter Chuck - Secretary, Jeff Lackey and Kelley Retherford.



PORT OF NEWPORT DISTRICT

The Port of Newport is located on the central Oregon coast in the City of Newport, Lincoln County seat and major business/economic hub of the area, and encompasses approximately 59 square miles and has an estimated population of 10,800 persons. Port boundaries reach north to Otter Rock, east up to six miles inland, south to Seal Rock, and west to the Pacific Ocean.

OUR MISSION AND VISION

Mission: "Build and maintain waterfront facilities, and promote/support projects and programs in cooperation with other community organizations and businesses that will retain and create new jobs and increase community economic development."

Vision: The Port of Newport will serve as the premier Oregon coast port for the commercial fishing fleets, for recreational fishing and tourism, and for ocean observation and marine research support. We will be one of the top two Oregon coast ports for waterborne commerce while protecting and enhancing the beauty and integrity of the natural environment which is the foundation of our working waterfront community.

FACILITIES OPERATION

Today the Port operates several facilities including:

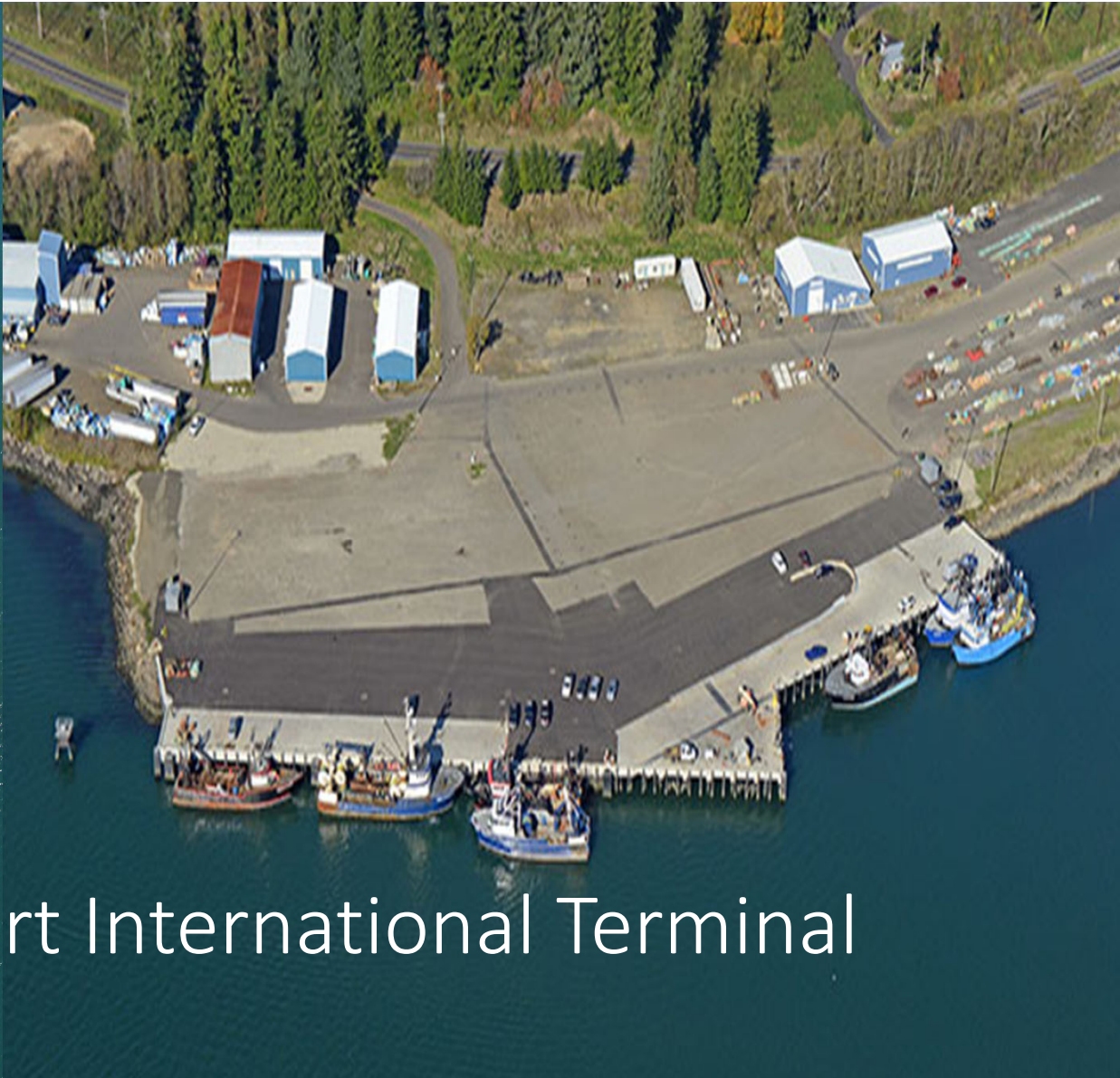
- North Commercial Marina
- Newport International Terminal
- South Beach Recreational Marina
- South Beach RV Park

The Port also manages leases with several businesses, including Englund Marine, Rogue Brewery, NOAA, OSU, Oregon Coast Aquarium, plus some charter companies and other services provided, amongst others.

Currently the Port of Newport employs 24 full time employees plus seasonal employees as needed.

North Commercial Marina





Newport International Terminal

SOUTH BEACH MARINA



PORT OF NEWPORT RV PARK



An aerial photograph showing the Oregon State University (OSU) campus and NOAA facilities in Astoria, Oregon. The OSU campus is located on a peninsula, featuring several large, modern buildings and a central circular driveway. The NOAA facilities, including a large white building and a pier with several research vessels, are situated along the waterfront. The water is a deep blue, and the sky is clear. The text "OSU" is overlaid in white in the upper left, and "NOAA" is overlaid in white in the lower center.

OSU

NOAA

An aerial photograph of a harbor area. In the foreground, a large green steel arch bridge spans across the water. Behind the bridge, there are several marinas filled with sailboats and yachts. To the right, there are large parking lots and industrial or commercial buildings. The background shows a residential area with houses and trees on a hillside. The word "QUESTIONS" is overlaid in large white letters in the center of the image.

QUESTIONS

Pmiranda@portofnewport.com
(541) 265-7758
Website: portofnewport.com